



**LABORATORY GROWN DIAMOND REPORT**

December 2, 2025  
 IGI Report Number **LG754524437**  
 Description **LABORATORY GROWN DIAMOND**  
 Shape and Cutting Style **ROUND BRILLIANT**  
 Measurements **5.10 - 5.15 X 3.21 MM**

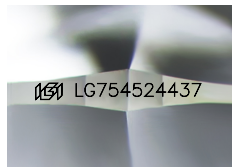
**GRADING RESULTS**

Carat Weight **0.52 CARAT**  
 Color Grade **E**  
 Clarity Grade **VVS 2**  
 Cut Grade **EXCELLENT**

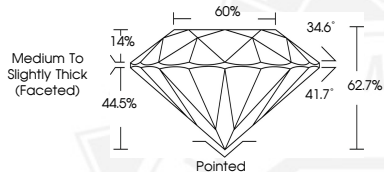
**ADDITIONAL GRADING INFORMATION**

Polish **VERY GOOD**  
 Symmetry **VERY GOOD**  
 Fluorescence **NONE**  
 Inscription(s) **IGI LG754524437**

Comments: This Laboratory Grown Diamond was created by Chemical Vapor Deposition (CVD) growth process. Type IIa



Sample Image Used



December 2, 2025  
 IGI Report Number **LG754524437**  
 ROUND BRILLIANT  
 LABORATORY GROWN DIAMOND  
 5.10 - 5.15 X 3.21 MM  
 Carat Weight **0.52 CARAT**  
 Color Grade **E**  
 Clarity Grade **VVS 2**  
 Cut Grade **EXCELLENT**  
 Polish **VERY GOOD**  
 Symmetry **VERY GOOD**  
 Fluorescence **NONE**  
 Inscription(s) **IGI LG754524437**  
 Comments: This Laboratory Grown Diamond was created by Chemical Vapor Deposition (CVD) growth process. Type IIa



December 2, 2025  
 IGI Report Number **LG754524437**  
 ROUND BRILLIANT  
 LABORATORY GROWN DIAMOND  
 5.10 - 5.15 X 3.21 MM  
 Carat Weight **0.52 CARAT**  
 Color Grade **E**  
 Clarity Grade **VVS 2**  
 Cut Grade **EXCELLENT**  
 Polish **VERY GOOD**  
 Symmetry **VERY GOOD**  
 Fluorescence **NONE**  
 Inscription(s) **IGI LG754524437**  
 Comments: This Laboratory Grown Diamond was created by Chemical Vapor Deposition (CVD) growth process. Type IIa



THIS DOCUMENT WAS PRODUCED WITH THE FOLLOWING SECURITY MEASURES: SPECIAL DOCUMENT PAPER, INK SCREENS, WATERMARK, BACKGROUND DESIGNS, HOLOGRAM AND OTHER SECURITY FEATURES NOT LISTED AND DO EXCEED DOCUMENT SECURITY INDUSTRY GUIDELINES.