



December 3, 2025

IGI Report Number **LG754524414**

**ROUND BRILLIANT
LABORATORY GROWN DIAMOND**
5.18 - 5.21 X 3.14 MM

Carat Weight	0.54 CARAT
Color Grade	E
Clarity Grade	VVS 2
Cut Grade	VERY GOOD
Polish	VERY GOOD
Symmetry	VERY GOOD
Fluorescence	NONE
Inscription(s)	IGI LG754524414

Comments: This Laboratory Grown Diamond was created by Chemical Vapor Deposition (CVD) growth process. Type IIa

LABORATORY GROWN DIAMOND REPORT

December 3, 2025
IGI Report Number **LG754524414**
Description **LABORATORY GROWN DIAMOND**
Shape and Cutting Style **ROUND BRILLIANT**
Measurements **5.18 - 5.21 X 3.14 MM**

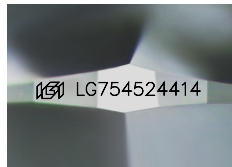
GRADING RESULTS

Carat Weight **0.54 CARAT**
Color Grade **E**
Clarity Grade **VVS 2**
Cut Grade **VERY GOOD**

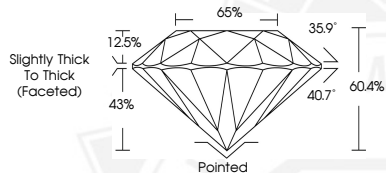
ADDITIONAL GRADING INFORMATION

Polish **VERY GOOD**
Symmetry **VERY GOOD**
Fluorescence **NONE**
Inscription(s) **IGI LG754524414**

Comments: This Laboratory Grown Diamond was created by Chemical Vapor Deposition (CVD) growth process.
Type IIa



Sample Image Used



December 3, 2025

IGI Report Number **LG754524414**

**ROUND BRILLIANT
LABORATORY GROWN DIAMOND**
5.18 - 5.21 X 3.14 MM

Carat Weight	0.54 CARAT
Color Grade	E
Clarity Grade	VVS 2
Cut Grade	VERY GOOD
Polish	VERY GOOD
Symmetry	VERY GOOD
Fluorescence	NONE
Inscription(s)	IGI LG754524414

Comments: This Laboratory Grown Diamond was created by Chemical Vapor Deposition (CVD) growth process. Type IIa



THIS DOCUMENT WAS PRODUCED WITH THE FOLLOWING SECURITY MEASURES: SPECIAL DOCUMENT PAPER, INK SCREENS, WATERMARK, BACKGROUND DESIGNS, HOLOGRAM AND OTHER SECURITY FEATURES NOT LISTED AND DO EXCEED DOCUMENT SECURITY INDUSTRY GUIDELINES.