



ELECTRONIC COPY

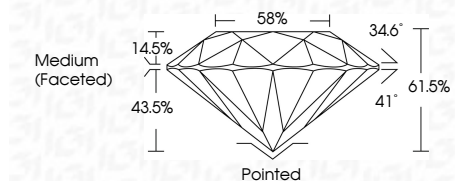
LG754522814 Report verification at igi.org



December 2, 2025 IGI Report Number LG754522814 Description LABORATORY GROWN DIAMOND Shape and Cutting Style ROUND BRILLIANT Measurements 8.15 - 8.19 X 5.02 MM

GRADING RESULTS

Carat Weight 2.06 CARATS Color Grade D Clarity Grade VVS 1 Cut Grade IDEAL



ADDITIONAL GRADING INFORMATION

Polish EXCELLENT Symmetry EXCELLENT Fluorescence NONE Inscription(s) LG754522814 Comments: This Laboratory Grown Diamond was created by Chemical Vapor Deposition (CVD) growth process. Type IIa



December 2, 2025 IGI Report No LG754522814 ROUND BRILLIANT 8.15 - 8.19 X 5.02 MM 2.06 CARATS D Color Grade VVS 1 IDEAL 61.5% 58% Medium (Faceted) Pointed EXCELLENT EXCELLENT NONE NONE LG754522814

LABORATORY GROWN DIAMOND REPORT

December 2, 2025 IGI Report Number LG754522814 Description LABORATORY GROWN DIAMOND Shape and Cutting Style ROUND BRILLIANT Measurements 8.15 - 8.19 X 5.02 MM

GRADING RESULTS

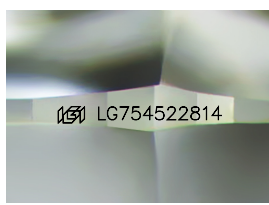
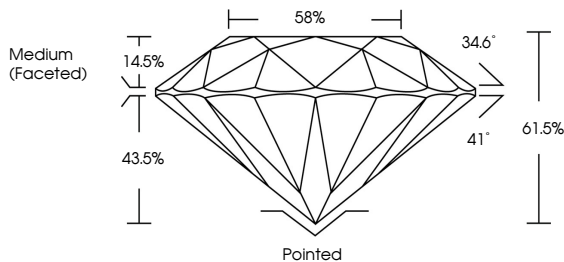
Carat Weight 2.06 CARATS Color Grade D Clarity Grade VVS 1 Cut Grade IDEAL

ADDITIONAL GRADING INFORMATION

Polish EXCELLENT Symmetry EXCELLENT Fluorescence NONE Inscription(s) LG754522814

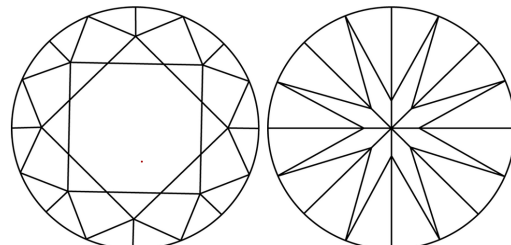
Comments: This Laboratory Grown Diamond was created by Chemical Vapor Deposition (CVD) growth process. Type IIa

PROPORTIONS



Sample Image Used

CLARITY CHARACTERISTICS



KEY TO SYMBOLS

Red symbols indicate internal characteristics. Green symbols indicate external characteristics.

COLOR

D E F G H I J Faint Very Light Light

CLARITY

FL IF VVS 1-2 VS 1-2 SI 1-2 I 1-3 Flawless Internally Flawless Very Very Slightly Included Very Slightly Included Slightly Included Included

