



**ELECTRONIC COPY**

## LABORATORY GROWN DIAMOND REPORT

January 6, 2026	
IGI Report Number	LG754521317
Description	LABORATORY GROWN DIAMOND
Shape and Cutting Style	ROUND BRILLIANT
Measurements	8.12 - 8.17 X 4.98 MM

## GRADING RESULTS

Carat Weight	2.05 CARATS
Color Grade	E
Clarity Grade	VVS 2
Cut Grade	IDEAL

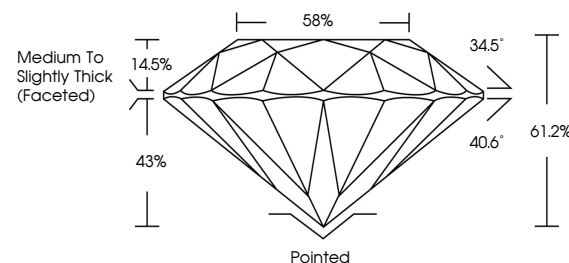
### ADDITIONAL GRADING INFORMATION

Polish	EXCELLENT
Symmetry	EXCELLENT
Fluorescence	NONE
Inscription(s)	151 LG754521317

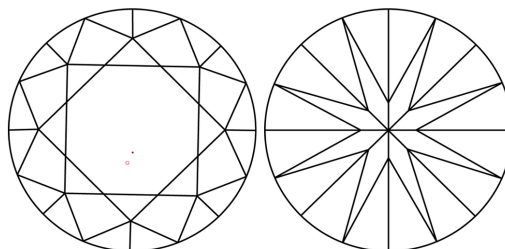
Comments: This Laboratory Grown Diamond was created by Chemical Vapor Deposition (CVD) growth process.  
Type IIa

LG754521317  
Report verification at [igi.org](https://igi.org)

## PROPORTIONS

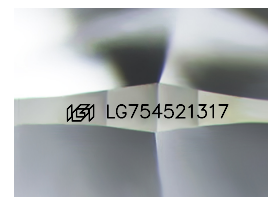


## CLARITY CHARACTERISTICS



## KEY TO SYMBOLS

Red symbols indicate internal characteristics.  
Green symbols indicate external characteristics.



Sample Image Used

## COLOR

D E F G H I J Faint Very Light Light

## CLARITY

FL	IF	VVS <sup>1-2</sup>	VS <sup>1-2</sup>	SI <sup>1-2</sup>	I <sup>1-3</sup>
Flawless	Internally Flawless	Very Very Slightly Included	Very Slightly Included	Slightly Included	Included

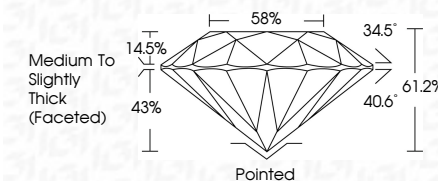
## LABORATORY GROWN DIAMOND REPORT



January 6, 2026	
IGI Report Number	LG754521317
Description	LABORATORY GROWN DIAMOND
Shape and Cutting Style	ROUND BRILLIANT
Measurements	8.12 - 8.17 X 4.98 MM

## GRADING RESULTS

Carat Weight	2.05 CARATS
Color Grade	E
Clarity Grade	VVS 2
Cut Grade	IDEAL



### ADDITIONAL GRADING INFORMATION

Polish	EXCELLENT
Symmetry	EXCELLENT
Fluorescence	NONE
Inscription(s)	 LG754521317
<p>Comments: This Laboratory Grown Diamond was created by Chemical Vapor Deposition (CVD) growth process.</p> <p>Type IIa</p>	



© IGI 2020, International Gemological Institute

FD - 10 20

**www.igi.org**



THIS DOCUMENT WAS PRODUCED WITH THE FOLLOWING SECURITY MEASURES: SPECIAL DOCUMENT PAPER, INK SCREENS, WATERMARK, BACKGROUND DESIGNS, HOLOGRAM AND OTHER SECURITY FEATURES NOT LISTED AND DO EXCEED DOCUMENT SECURITY INDUSTRY GUIDELINES

January 6, 2026  
GI Report No LG754521317  
ROUND BRILLIANT

1.12 - 8.17 X 4.98 MM	Carat Weight	2.05 CARATS
	Color Grade	E
	Clarity Grade	VVS 2
	Cut Grade	IDEAL
	Depth	61.2%
	Table	58%
	Girdle	Medium to Slightly Thick (Faceted)
	Culet	Pointed
	Polish	EXCELLENT
	Symmetry	EXCELLENT
	Fluorescence	NONE

**Comments:**  
This Laboratory Grown Diamond was  
created by Chemical Vapor Deposition  
(CVD) growth process.