



**ELECTRONIC COPY**

LG754520373  
Report verification at igi.org



December 23, 2025

IGI Report Number **LG754520373**

Description **LABORATORY GROWN DIAMOND**

Shape and Cutting Style **EMERALD CUT**

Measurements **14.08 X 7.54 X 5.61 MM**

**GRADING RESULTS**

Carat Weight **6.11 CARATS**

Color Grade **E**

Clarity Grade **VS 1**

December 23, 2025  
IGI Report Number **LG754520373**  
Description **LABORATORY GROWN DIAMOND**  
Shape and Cutting Style **EMERALD CUT**  
Measurements **14.08 X 7.54 X 5.61 MM**

**GRADING RESULTS**

Carat Weight **6.11 CARATS**

Color Grade **E**

Clarity Grade **VS 1**

**ADDITIONAL GRADING INFORMATION**

Polish **EXCELLENT**

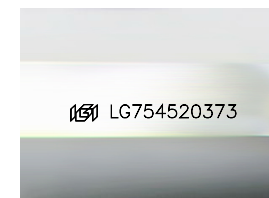
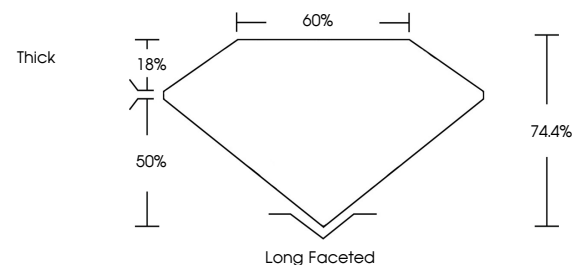
Symmetry **EXCELLENT**

Fluorescence **NONE**

Inscription(s) **LG754520373**

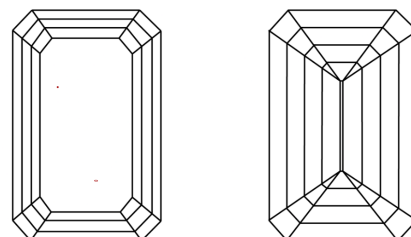
Comments: This Laboratory Grown Diamond was created by Chemical Vapor Deposition (CVD) growth process. Type IIa

**PROPORTIONS**



Sample Image Used

**CLARITY CHARACTERISTICS**



**KEY TO SYMBOLS**

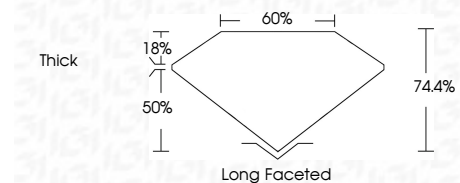
Red symbols indicate internal characteristics.  
Green symbols indicate external characteristics.

**COLOR**

D E F G H I J Faint Very Light Light

**CLARITY**

FL	IF	VS <sup>1-2</sup>	VS <sup>1-2</sup>	SI <sup>1-2</sup>	I <sup>1-3</sup>
Flawless	Internally Flawless	Very Very Slightly Included	Very Slightly Included	Slightly Included	Included



**ADDITIONAL GRADING INFORMATION**

Polish **EXCELLENT**

Symmetry **EXCELLENT**

Fluorescence **NONE**

Inscription(s) **LG754520373**

Comments: This Laboratory Grown Diamond was created by Chemical Vapor Deposition (CVD) growth process. Type IIa



**IGI**



December 23, 2025  
IGI Report No **LG754520373**  
**EMERALD CUT**  
**6.11 CARATS**  
E  
Color Grade  
VS 1  
Clarity Grade  
74.4%  
50%  
Thick  
Long Faceted  
Culet  
Polish  
Symmetry  
Fluorescence  
EXCELLENT  
EXCELLENT  
NONE  
NONE  
Inscription(s)  
 **LG754520373**  
Comments: This Laboratory Grown Diamond was created by Chemical Vapor Deposition (CVD) growth process. Type IIa