



ELECTRONIC COPY

LG754520035
Report verification at igi.org



December 18, 2025

IGI Report Number **LG754520035**

Description **LABORATORY GROWN DIAMOND**

Shape and Cutting Style **ROUND MODIFIED BRILLIANT**

Measurements **8.16 - 8.17 X 4.95 MM**

GRADING RESULTS

Carat Weight **2.06 CARATS**

Color Grade **FANCY INTENSE GREEN**

Clarity Grade **VVS 2**

December 18, 2025
IGI Report Number **LG754520035**
Description **LABORATORY GROWN DIAMOND**
Shape and Cutting Style **ROUND MODIFIED BRILLIANT**
Measurements **8.16 - 8.17 X 4.95 MM**

GRADING RESULTS

Carat Weight **2.06 CARATS**

Color Grade **FANCY INTENSE GREEN**

Clarity Grade **VVS 2**

ADDITIONAL GRADING INFORMATION

Polish **EXCELLENT**

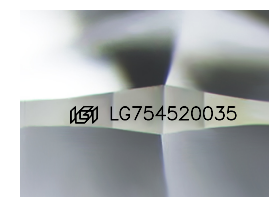
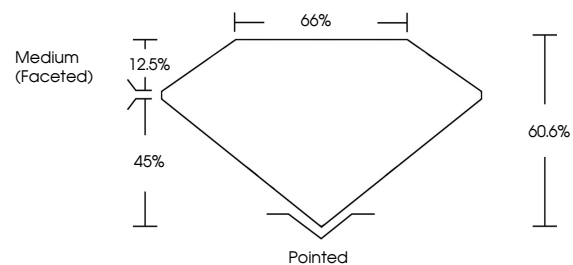
Symmetry **EXCELLENT**

Fluorescence **VERY SLIGHT**

Inscription(s) **LG754520035**

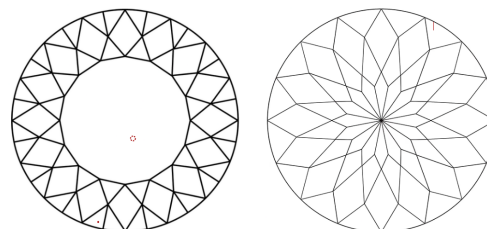
Comments: This Laboratory Grown Diamond was created by Chemical Vapor Deposition (CVD) growth process. Indications of post-growth treatment.

PROPORTIONS



Sample Image Used

CLARITY CHARACTERISTICS



KEY TO SYMBOLS

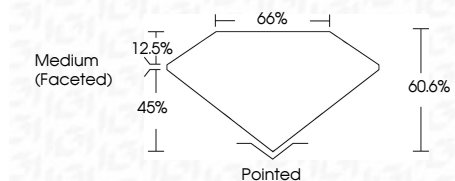
Red symbols indicate internal characteristics.
Green symbols indicate external characteristics.

COLOR

D E F G H I J Faint Very Light Light

CLARITY

FL	IF	VVS ¹⁻²	VS ¹⁻²	SI ¹⁻²	I ¹⁻³
Flawless	Internally Flawless	Very Very Slightly Included	Very Slightly Included	Slightly Included	Included



ADDITIONAL GRADING INFORMATION

Polish **EXCELLENT**

Symmetry **EXCELLENT**

Fluorescence **VERY SLIGHT**

Inscription(s) **LG754520035**

Comments: This Laboratory Grown Diamond was created by Chemical Vapor Deposition (CVD) growth process. Indications of post-growth treatment.



IGI



December 18, 2025
IGI Report No **LG754520035**
ROUND MODIFIED BRILLIANT
8.16 - 8.17 X 4.95 MM
Carat Weight **2.06 CARATS**
Color Grade **FANCY INTENSE GREEN**
Clarity Grade **VVS 2**
Depth **45%**
Table **12.5%**
Girdle **Medium (Faceted)**
Culet **Pointed**
Polish **EXCELLENT**
Symmetry **EXCELLENT**
Fluorescence **VERY SLIGHT**
Inscription(s) **LG754520035**
Comments: This Laboratory Grown Diamond was created by Chemical Vapor Deposition (CVD) growth process. Indications of post-growth treatment.