



ELECTRONIC COPY

LG754519919
Report verification at igi.org



December 22, 2025
IGI Report Number **LG754519919**
Description **LABORATORY GROWN DIAMOND**
Shape and Cutting Style **MODIFIED EMERALD CUT**
Measurements **7.88 X 5.47 X 3.64 MM**

GRADING RESULTS

Carat Weight **1.56 CARAT**
Color Grade **F**
Clarity Grade **VS 1**

ADDITIONAL GRADING INFORMATION

Polish **EXCELLENT**
Symmetry **EXCELLENT**
Fluorescence **NONE**
Inscription(s) **IGI LG754519919**

ADDITIONAL GRADING INFORMATION

Polish **EXCELLENT**
Symmetry **EXCELLENT**
Fluorescence **NONE**
Inscription(s) **IGI LG754519919**
Comments: This Laboratory Grown Diamond was created by Chemical Vapor Deposition (CVD) growth process. Type IIa



December 22, 2025
IGI Report No LG754519919
MODIFIED EMERALD CUT
7.88 X 5.47 X 3.64 MM
1.56 CARAT
F
VS 1
66.5%
65%
Medium to Slightly Thick
Long
EXCELLENT
EXCELLENT
NONE
IGI LG754519919
Comments: This Laboratory Grown Diamond was created by Chemical Vapor Deposition (CVD) growth process. Type IIa

December 22, 2025
IGI Report Number **LG754519919**
Description **LABORATORY GROWN DIAMOND**
Shape and Cutting Style **MODIFIED EMERALD CUT**
Measurements **7.88 X 5.47 X 3.64 MM**

GRADING RESULTS

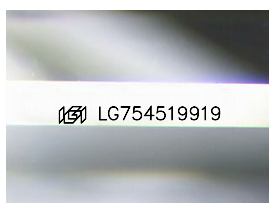
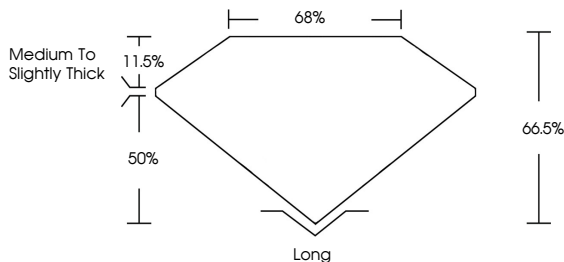
Carat Weight **1.56 CARAT**
Color Grade **F**
Clarity Grade **VS 1**

ADDITIONAL GRADING INFORMATION

Polish **EXCELLENT**
Symmetry **EXCELLENT**
Fluorescence **NONE**
Inscription(s) **IGI LG754519919**

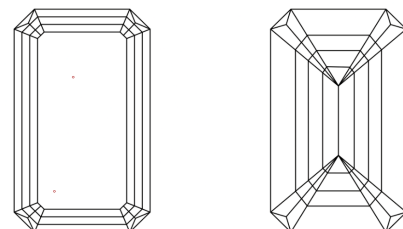
Comments: This Laboratory Grown Diamond was created by Chemical Vapor Deposition (CVD) growth process. Type IIa

PROPORTIONS



Sample Image Used

CLARITY CHARACTERISTICS



KEY TO SYMBOLS

Red symbols indicate internal characteristics.
Green symbols indicate external characteristics.

COLOR

D	E	F	G	H	I	J	Faint	Very Light	Light
---	---	---	---	---	---	---	-------	------------	-------

CLARITY

FL	IF	VS ¹⁻²	VS ¹⁻²	SI ¹⁻²	I ¹⁻³
Flawless	Internally Flawless	Very Very Slightly Included	Very Slightly Included	Slightly Included	Included

