



ELECTRONIC COPY

LG754519776
Report verification at igi.org



January 8, 2026

IGI Report Number **LG754519776**

Description **LABORATORY GROWN DIAMOND**

Shape and Cutting Style **CUSHION BRILLIANT**

Measurements **10.25 X 7.54 X 5.03 MM**

GRADING RESULTS

Carat Weight **2.77 CARATS**

Color Grade **D**

Clarity Grade **VS 1**

January 8, 2026
IGI Report Number **LG754519776**
Description **LABORATORY GROWN DIAMOND**
Shape and Cutting Style **CUSHION BRILLIANT**
Measurements **10.25 X 7.54 X 5.03 MM**

GRADING RESULTS

Carat Weight **2.77 CARATS**

Color Grade **D**

Clarity Grade **VS 1**

ADDITIONAL GRADING INFORMATION

Polish **EXCELLENT**

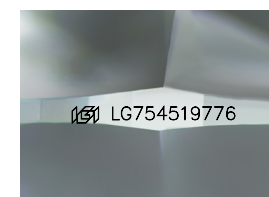
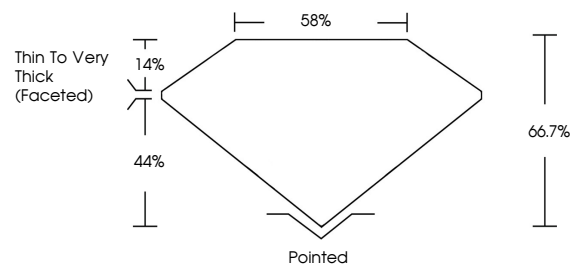
Symmetry **EXCELLENT**

Fluorescence **NONE**

Inscription(s) **IGI LG754519776**

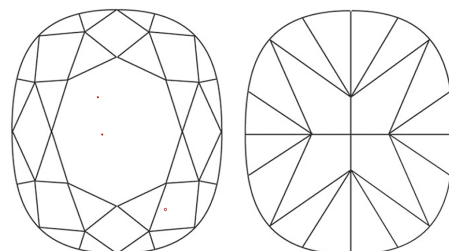
Comments: This Laboratory Grown Diamond was created by Chemical Vapor Deposition (CVD) growth process.
Type IIa

PROPORTIONS



Sample Image Used

CLARITY CHARACTERISTICS



KEY TO SYMBOLS

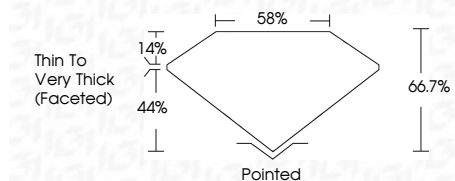
Red symbols indicate internal characteristics.
Green symbols indicate external characteristics.

COLOR

D E F G H I J Faint Very Light Light

CLARITY

FL	IF	VS ¹⁻²	VS ¹⁻²	SI ¹⁻²	I ¹⁻³
Flawless	Internally Flawless	Very Very Slightly Included	Very Slightly Included	Slightly Included	Included



ADDITIONAL GRADING INFORMATION

Polish **EXCELLENT**

Symmetry **EXCELLENT**

Fluorescence **NONE**

Inscription(s) **IGI LG754519776**

Comments: This Laboratory Grown Diamond was created by Chemical Vapor Deposition (CVD) growth process.
Type IIa



IGI



January 8, 2026
IGI Report No LG754519776
CUSHION BRILLIANT
10.25 X 7.54 X 5.03 MM
2.77 CARATS
D
VS 1
66.7%
85%
Thin To Very Thick (Faceted)
Pointed
EXCELLENT
EXCELLENT
NONE
IGI LG754519776
Comments: This Laboratory Grown Diamond was created by Chemical Vapor Deposition (CVD) growth process.
Type IIa