

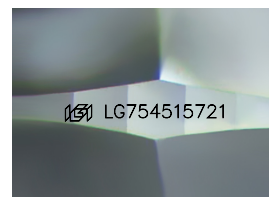
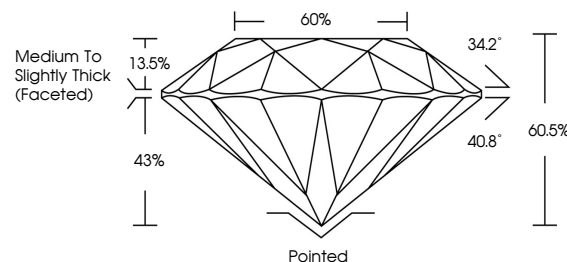


ELECTRONIC COPY

LABORATORY GROWN DIAMOND REPORT

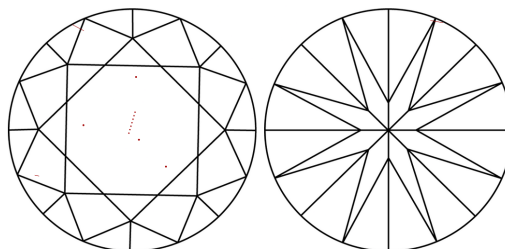
LG754515721
Report verification at lgi.org

PROPORTIONS



Sample Image Used

CLARITY CHARACTERISTICS



KEY TO SYMBOLS

Red symbols indicate internal characteristics.
Green symbols indicate external characteristics.

COLOR

D E F G H I J Faint Very Light Light

CLARITY

FL	IF	VVS ¹⁻²	VS ¹⁻²	SI ¹⁻²	I ¹⁻³
Flawless	Internally Flawless	Very Very Slightly Included	Very Slightly Included	Slightly Included	Included

LABORATORY GROWN DIAMOND REPORT



December 25, 2025

IGI Report Number **LG754515721**Description **LABORATORY GROWN DIAMOND**Shape and Cutting Style **ROUND BRILLIANT**

Measurements 8.07 - 8.13 X 4.91 MM

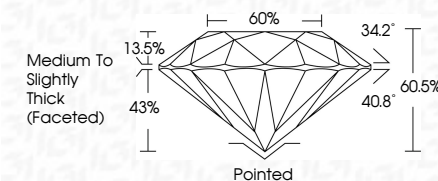
GRADING RESULTS

Carat Weight **2.00 CARATS**

Color Grade

Clarity Grade VS 1

Cut Grade **IDEAL**



ADDITIONAL GRADING INFORMATION

Polish **EXCELLENT**Symmetry **EXCELLENT**Fluorescence NONEInscription(s) LG754515721

Comments: This Laboratory Grown Diamond was created by Chemical Vapor Deposition (CVD) growth process.
Type IIa



IG



© IGI 2020, International Gemological Institute

FD - 10 20

www.igi.org

THIS DOCUMENT WAS PRODUCED WITH THE FOLLOWING SECURITY MEASURES: SPECIAL DOCUMENT PAPER, INK SCREENS, WATERMARK, BACKGROUND DESIGNS, HOLOGRAM AND OTHER SECURITY FEATURES NOT LISTED AND DO EXCEED DOCUMENT SECURITY INDUSTRY GUIDELINE

December 25, 2025
GI Report No LG754515721
ROUND BRILLIANT

3.07 - 8.13 X 4.91 MM	2.00 CARATS	VS 1	Pointed
Carat Weight	IDEAL	60.0%	EXCELLENT
Color Grade	60.0%	Medium to Slightly Thick (faceted)	EXCELLENT
Clarity Grade	VS 1		NONE
Depth	Out Grade		4mm (27.46/15.00)
Table			
Girdle			
Culet			
Polish			
Symmetry			
Fluorescence			

Comments:
This Laboratory Grown Diamond was
created by Chemical Vapor Deposition
(CVD) growth process.