



**ELECTRONIC COPY**

LG754514542  
Report verification at igi.org



April 21, 2026

IGI Report Number **LG754514542**

Description **LABORATORY GROWN DIAMOND**

Shape and Cutting Style **LOZENGE STEP CUT**

Measurements **14.74 X 9.63 X 6.01 MM**

**GRADING RESULTS**

Carat Weight **4.06 CARATS**

Color Grade **E**

Clarity Grade **VVS 2**

April 21, 2026  
IGI Report Number **LG754514542**  
Description **LABORATORY GROWN DIAMOND**  
Shape and Cutting Style **LOZENGE STEP CUT**  
Measurements **14.74 X 9.63 X 6.01 MM**

**GRADING RESULTS**

Carat Weight **4.06 CARATS**

Color Grade **E**

Clarity Grade **VVS 2**

**ADDITIONAL GRADING INFORMATION**

Polish **EXCELLENT**

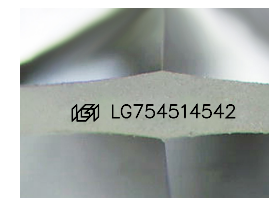
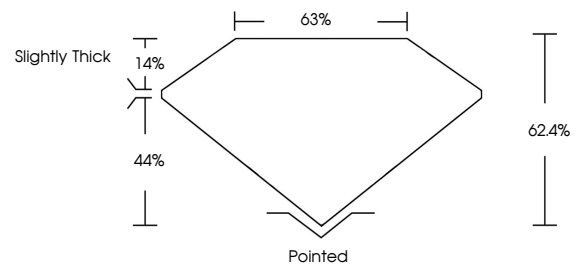
Symmetry **EXCELLENT**

Fluorescence **NONE**

Inscription(s) **IGI LG754514542**

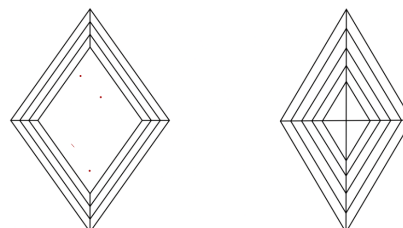
Comments: This Laboratory Grown Diamond was created by Chemical Vapor Deposition (CVD) growth process. Type IIa

**PROPORTIONS**



Sample Image Used

**CLARITY CHARACTERISTICS**



**KEY TO SYMBOLS**

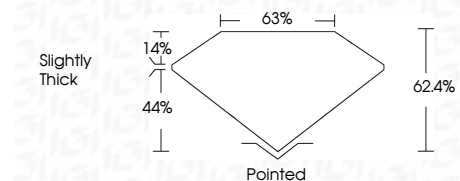
Red symbols indicate internal characteristics.  
Green symbols indicate external characteristics.

**COLOR**

D E F G H I J Faint Very Light Light

**CLARITY**

FL	IF	VVS <sup>1-2</sup>	VS <sup>1-2</sup>	SI <sup>1-2</sup>	I <sup>1-3</sup>
Flawless	Internally Flawless	Very Very Slightly Included	Very Slightly Included	Slightly Included	Included



**ADDITIONAL GRADING INFORMATION**

Polish **EXCELLENT**

Symmetry **EXCELLENT**

Fluorescence **NONE**

Inscription(s) **IGI LG754514542**

Comments: This Laboratory Grown Diamond was created by Chemical Vapor Deposition (CVD) growth process. Type IIa



April 21, 2026  
IGI Report No LG754514542  
**LOZENGE STEP CUT**  
14.74 X 9.63 X 6.01 MM  
4.06 CARATS  
E  
VVS 2  
62.4%  
63%  
Slightly Thick  
Pointed  
EXCELLENT  
EXCELLENT  
NONE  
IGI LG754514542  
Comments: This Laboratory Grown Diamond was created by Chemical Vapor Deposition (CVD) growth process. Type IIa