



ELECTRONIC COPY

LG754513794
Report verification at igi.org



April 20, 2026
IGI Report Number LG754513794
Description LABORATORY GROWN DIAMOND
Shape and Cutting Style TRIANGULAR MODIFIED BRILLIANT
Measurements 11.65 X 11.15 X 5.80 MM
GRADING RESULTS
Carat Weight 4.51 CARATS
Color Grade E
Clarity Grade VVS 2

LABORATORY GROWN DIAMOND REPORT

April 20, 2026
IGI Report Number LG754513794
Description LABORATORY GROWN DIAMOND
Shape and Cutting Style TRIANGULAR MODIFIED BRILLIANT
Measurements 11.65 X 11.15 X 5.80 MM

GRADING RESULTS

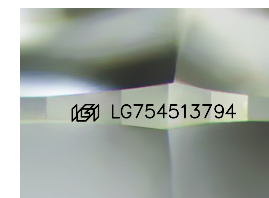
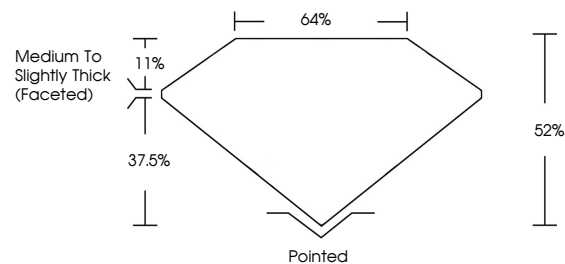
Carat Weight 4.51 CARATS
Color Grade E
Clarity Grade VVS 2

ADDITIONAL GRADING INFORMATION

Polish EXCELLENT
Symmetry EXCELLENT
Fluorescence NONE
Inscription(s) LG754513794

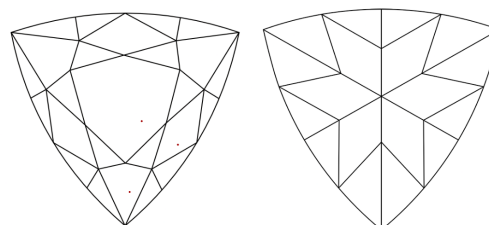
Comments: This Laboratory Grown Diamond was created by Chemical Vapor Deposition (CVD) growth process. Type IIa

PROPORTIONS



Sample Image Used

CLARITY CHARACTERISTICS



KEY TO SYMBOLS

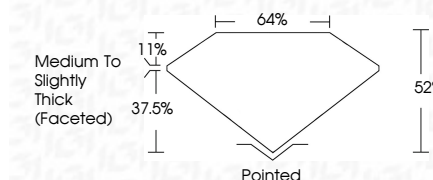
Red symbols indicate internal characteristics.
Green symbols indicate external characteristics.

COLOR

D E F G H I J Faint Very Light Light

CLARITY

FL IF VVS 1-2 VS 1-2 SI 1-2 I 1-3
Flawless Internally Flawless Very Very Slightly Included Very Slightly Included Slightly Included Included



ADDITIONAL GRADING INFORMATION

Polish EXCELLENT
Symmetry EXCELLENT
Fluorescence NONE
Inscription(s) LG754513794
Comments: This Laboratory Grown Diamond was created by Chemical Vapor Deposition (CVD) growth process. Type IIa



April 20, 2026
IGI Report No LG754513794
LABORATORY GROWN DIAMOND
11.65 X 11.15 X 5.80 MM
4.51 CARATS E
VVS 2
64% 37.5%
Medium to Slightly Thick (Faceted)
Pointed
EXCELLENT EXCELLENT NONE
None
Polish EXCELLENT
Symmetry EXCELLENT
Fluorescence NONE
Inscription(s) LG754513794
Comments: This Laboratory Grown Diamond was created by Chemical Vapor Deposition (CVD) growth process. Type IIa