



**ELECTRONIC COPY**

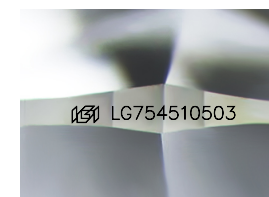
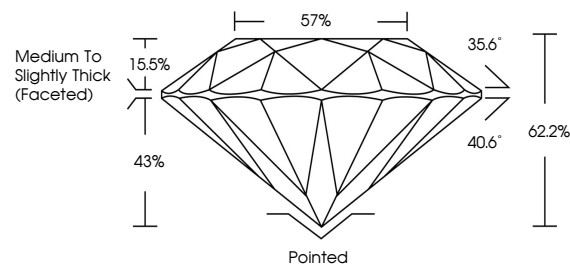
LG754510503  
Report verification at igi.org



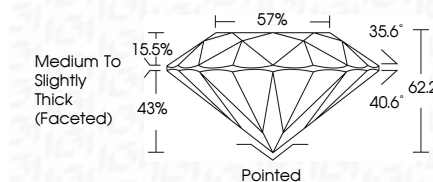
February 25, 2026  
IGI Report Number **LG754510503**  
Description **LABORATORY GROWN DIAMOND**  
Shape and Cutting Style **ROUND BRILLIANT**  
Measurements **9.45 - 9.50 X 5.89 MM**  
**GRADING RESULTS**  
Carat Weight **3.29 CARATS**  
Color Grade **I**  
Clarity Grade **VS 1**  
Cut Grade **IDEAL**

February 25, 2026  
IGI Report Number **LG754510503**  
Description **LABORATORY GROWN DIAMOND**  
Shape and Cutting Style **ROUND BRILLIANT**  
Measurements **9.45 - 9.50 X 5.89 MM**  
**GRADING RESULTS**  
Carat Weight **3.29 CARATS**  
Color Grade **I**  
Clarity Grade **VS 1**  
Cut Grade **IDEAL**

**PROPORTIONS**



Sample Image Used



**ADDITIONAL GRADING INFORMATION**

Polish **EXCELLENT**  
Symmetry **EXCELLENT**  
Fluorescence **NONE**  
Inscription(s) **IGI LG754510503**

Comments: This Laboratory Grown Diamond was created by Chemical Vapor Deposition (CVD) growth process. Type IIa

**ADDITIONAL GRADING INFORMATION**

Polish **EXCELLENT**  
Symmetry **EXCELLENT**  
Fluorescence **NONE**  
Inscription(s) **IGI LG754510503**  
Comments: This Laboratory Grown Diamond was created by Chemical Vapor Deposition (CVD) growth process. Type IIa

**COLOR**

D E F G H I J Faint Very Light Light

**CLARITY**

FL	IF	VS <sup>1-2</sup>	VS <sup>1-2</sup>	SI <sup>1-2</sup>	I <sup>1-3</sup>
Flawless	Internally Flawless	Very Very Slightly Included	Very Slightly Included	Slightly Included	Included



**IGI**



February 25, 2026  
IGI Report No LG754510503  
**ROUND BRILLIANT**  
9.45 - 9.50 X 5.89 MM  
3.29 CARATS  
Color Grade **I**  
Clarity Grade **VS 1**  
Depth **IDEAL**  
Table **62.2%**  
Girdle **57%**  
Medium To Slightly Thick (Faceted)  
Culet **Pointed**  
Polish **EXCELLENT**  
Symmetry **EXCELLENT**  
Fluorescence **NONE**  
Inscriptions(s) **IGI LG754510503**  
Comments: This Laboratory Grown Diamond was created by Chemical Vapor Deposition (CVD) growth process. Type IIa