



ELECTRONIC COPY

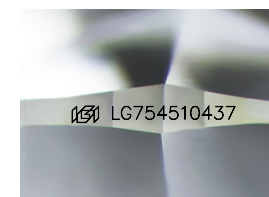
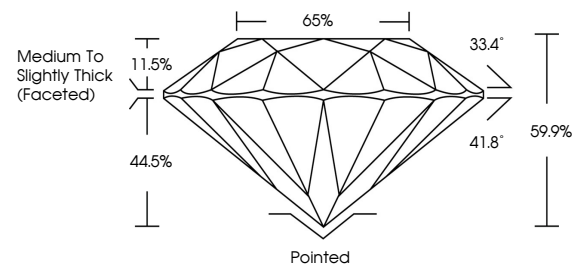
LG754510437
Report verification at igi.org



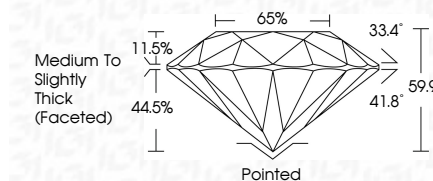
February 27, 2026
IGI Report Number **LG754510437**
Description **LABORATORY GROWN DIAMOND**
Shape and Cutting Style **ROUND BRILLIANT**
Measurements **8.45 - 8.52 X 5.07 MM**
GRADING RESULTS
Carat Weight **2.23 CARATS**
Color Grade **I**
Clarity Grade **VS 1**
Cut Grade **VERY GOOD**

February 27, 2026
IGI Report Number **LG754510437**
Description **LABORATORY GROWN DIAMOND**
Shape and Cutting Style **ROUND BRILLIANT**
Measurements **8.45 - 8.52 X 5.07 MM**
GRADING RESULTS
Carat Weight **2.23 CARATS**
Color Grade **I**
Clarity Grade **VS 1**
Cut Grade **VERY GOOD**

PROPORTIONS



Sample Image Used



ADDITIONAL GRADING INFORMATION

Polish **EXCELLENT**
Symmetry **EXCELLENT**
Fluorescence **NONE**
Inscription(s) **IGI LG754510437**

Comments: This Laboratory Grown Diamond was created by Chemical Vapor Deposition (CVD) growth process. Type IIa

ADDITIONAL GRADING INFORMATION

Polish **EXCELLENT**
Symmetry **EXCELLENT**
Fluorescence **NONE**
Inscription(s) **IGI LG754510437**
Comments: This Laboratory Grown Diamond was created by Chemical Vapor Deposition (CVD) growth process. Type IIa

COLOR

D E F G H I J Faint Very Light Light

CLARITY

FL	IF	VS ¹⁻²	VS ¹⁻²	SI ¹⁻²	I ¹⁻³
Flawless	Internally Flawless	Very Very Slightly Included	Very Slightly Included	Slightly Included	Included



IGI



February 27, 2026
IGI Report No LG754510437
ROUND BRILLIANT
8.45 - 8.52 X 5.07 MM
2.23 CARATS
Color Grade **I**
Clarity Grade **VS 1**
Depth **59.9%**
Table **65%**
Girdle **Medium To Slightly Thick (Faceted)**
Culet **Pointed**
Polish **EXCELLENT**
Symmetry **EXCELLENT**
Fluorescence **NONE**
Inscriptions(s) **IGI LG754510437**
Comments: This Laboratory Grown Diamond was created by Chemical Vapor Deposition (CVD) growth process. Type IIa