



ELECTRONIC COPY

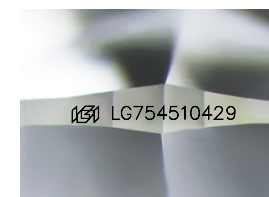
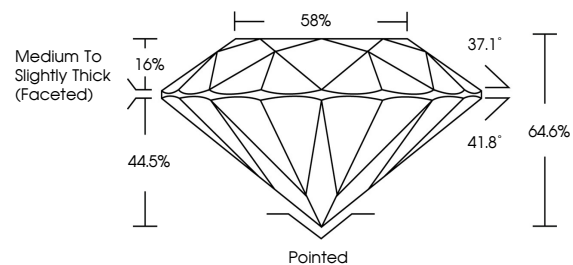
LG754510429
Report verification at igi.org



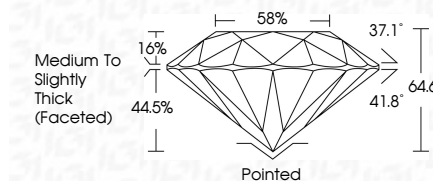
February 27, 2026
IGI Report Number **LG754510429**
Description **LABORATORY GROWN DIAMOND**
Shape and Cutting Style **ROUND BRILLIANT**
Measurements **7.27 - 7.34 X 4.72 MM**
GRADING RESULTS
Carat Weight **1.57 CARAT**
Color Grade **H**
Clarity Grade **VVS 2**
Cut Grade **VERY GOOD**

February 27, 2026
IGI Report Number **LG754510429**
Description **LABORATORY GROWN DIAMOND**
Shape and Cutting Style **ROUND BRILLIANT**
Measurements **7.27 - 7.34 X 4.72 MM**
GRADING RESULTS
Carat Weight **1.57 CARAT**
Color Grade **H**
Clarity Grade **VVS 2**
Cut Grade **VERY GOOD**

PROPORTIONS



Sample Image Used



ADDITIONAL GRADING INFORMATION

Polish **EXCELLENT**
Symmetry **EXCELLENT**
Fluorescence **NONE**
Inscription(s) **IGI LG754510429**

Comments: This Laboratory Grown Diamond was created by Chemical Vapor Deposition (CVD) growth process. Type IIa

ADDITIONAL GRADING INFORMATION

Polish **EXCELLENT**
Symmetry **EXCELLENT**
Fluorescence **NONE**
Inscription(s) **IGI LG754510429**
Comments: This Laboratory Grown Diamond was created by Chemical Vapor Deposition (CVD) growth process. Type IIa

COLOR

D E F G H I J Faint Very Light Light

CLARITY

FL	IF	VVS ¹⁻²	VS ¹⁻²	SI ¹⁻²	I ¹⁻³
Flawless	Internally Flawless	Very Very Slightly Included	Very Slightly Included	Slightly Included	Included



IGI



February 27, 2026
IGI Report No **LG754510429**
ROUND BRILLIANT
7.27 - 7.34 X 4.72 MM
Carat Weight **1.57 CARAT**
Color Grade **H**
Clarity Grade **VVS 2**
Cut Grade **VERY GOOD**
Depth **64.6%**
Table **16%**
Girdle **Medium To Slightly Thick (Faceted)**
Culet **Pointed**
Polish **EXCELLENT**
Symmetry **EXCELLENT**
Fluorescence **NONE**
Inscription(s) **IGI LG754510429**
Comments: This Laboratory Grown Diamond was created by Chemical Vapor Deposition (CVD) growth process. Type IIa