



ELECTRONIC COPY

LG754510420
Report verification at igi.org



February 27, 2026
IGI Report Number **LG754510420**
Description **LABORATORY GROWN DIAMOND**
Shape and Cutting Style **ROUND BRILLIANT**
Measurements **7.25 - 7.30 X 4.53 MM**
GRADING RESULTS
Carat Weight **1.52 CARAT**
Color Grade **H**
Clarity Grade **VS 1**
Cut Grade **VERY GOOD**

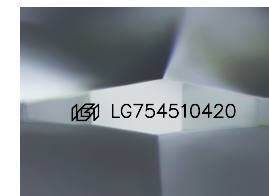
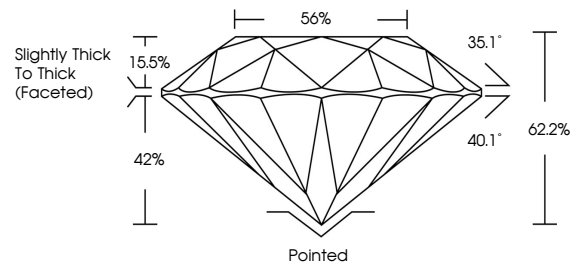
February 27, 2026
IGI Report Number **LG754510420**
Description **LABORATORY GROWN DIAMOND**
Shape and Cutting Style **ROUND BRILLIANT**
Measurements **7.25 - 7.30 X 4.53 MM**
GRADING RESULTS
Carat Weight **1.52 CARAT**
Color Grade **H**
Clarity Grade **VS 1**
Cut Grade **VERY GOOD**

ADDITIONAL GRADING INFORMATION

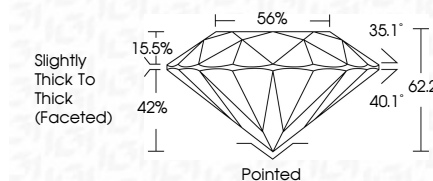
Polish **VERY GOOD**
Symmetry **EXCELLENT**
Fluorescence **NONE**
Inscription(s) **IGI LG754510420**

Comments: This Laboratory Grown Diamond was created by Chemical Vapor Deposition (CVD) growth process. Type IIa

PROPORTIONS



Sample Image Used



COLOR

D E F G H I J Faint Very Light Light

CLARITY

FL	IF	VS ¹⁻²	VS ¹⁻²	SI ¹⁻²	I ¹⁻³
Flawless	Internally Flawless	Very Very Slightly Included	Very Slightly Included	Slightly Included	Included

ADDITIONAL GRADING INFORMATION

Polish **VERY GOOD**
Symmetry **EXCELLENT**
Fluorescence **NONE**
Inscription(s) **IGI LG754510420**
Comments: This Laboratory Grown Diamond was created by Chemical Vapor Deposition (CVD) growth process. Type IIa



IGI



February 27, 2026
IGI Report No LG754510420
ROUND BRILLIANT
7.25 - 7.30 X 4.53 MM
1.52 CARAT
H
Color Grade
VERY GOOD
VS 1
Depth
62.2%
Table
56%
Girdle
Slightly Thick To Thick (Faceted)
Culet
Pointed
Polish
VERY GOOD
Symmetry
EXCELLENT
Fluorescence
NONE
Inscription(s)
IGI LG754510420
Comments: This Laboratory Grown Diamond was created by Chemical Vapor Deposition (CVD) growth process. Type IIa