



ELECTRONIC COPY

LG754510419
Report verification at igi.org



February 27, 2026

IGI Report Number **LG754510419**

Description **LABORATORY GROWN DIAMOND**

Shape and Cutting Style **ROUND BRILLIANT**

Measurements **7.88 - 7.93 X 4.55 MM**

GRADING RESULTS

Carat Weight **1.74 CARAT**

Color Grade **I**

Clarity Grade **VS 2**

Cut Grade **VERY GOOD**

February 27, 2026

IGI Report Number **LG754510419**

Description **LABORATORY GROWN DIAMOND**

Shape and Cutting Style **ROUND BRILLIANT**

Measurements **7.88 - 7.93 X 4.55 MM**

GRADING RESULTS

Carat Weight **1.74 CARAT**

Color Grade **I**

Clarity Grade **VS 2**

Cut Grade **VERY GOOD**

ADDITIONAL GRADING INFORMATION

Polish **EXCELLENT**

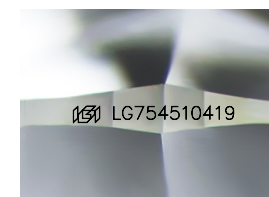
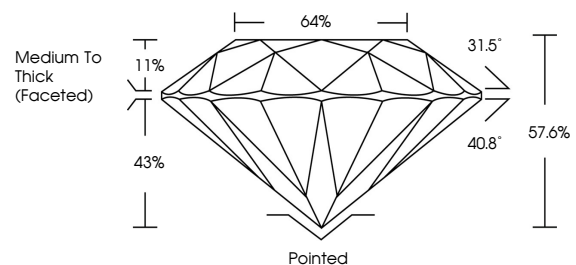
Symmetry **EXCELLENT**

Fluorescence **NONE**

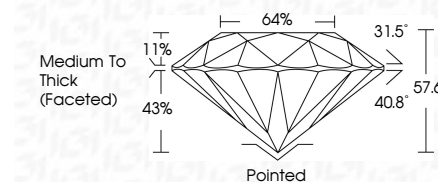
Inscription(s) **LG754510419**

Comments: This Laboratory Grown Diamond was created by Chemical Vapor Deposition (CVD) growth process. Type IIa

PROPORTIONS



Sample Image Used



COLOR

D E F G H I J Faint Very Light Light

CLARITY

FL	IF	VS ¹⁻²	VS ¹⁻²	SI ¹⁻²	I ¹⁻³
Flawless	Internally Flawless	Very Very Slightly Included	Very Slightly Included	Slightly Included	Included

ADDITIONAL GRADING INFORMATION

Polish **EXCELLENT**

Symmetry **EXCELLENT**

Fluorescence **NONE**

Inscription(s) **LG754510419**

Comments: This Laboratory Grown Diamond was created by Chemical Vapor Deposition (CVD) growth process. Type IIa



IGI



February 27, 2026
IGI Report No LG754510419
ROUND BRILLIANT

7.88 - 7.93 X 4.55 MM
1.74 CARAT
Color Grade **I**
Clarity Grade **VS 2**
Cut Grade **VERY GOOD**
Depth **57.6%**
Table **64%**
Girdle **Medium To Thick (Faceted)**

Culet **Pointed**
Polish **EXCELLENT**
Symmetry **EXCELLENT**
Fluorescence **NONE**
Inscription(s) **LG754510419**

Comments: This Laboratory Grown Diamond was created by Chemical Vapor Deposition (CVD) growth process. Type IIa