



**ELECTRONIC COPY**

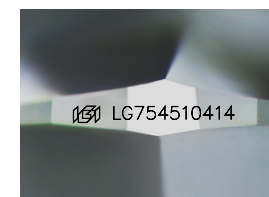
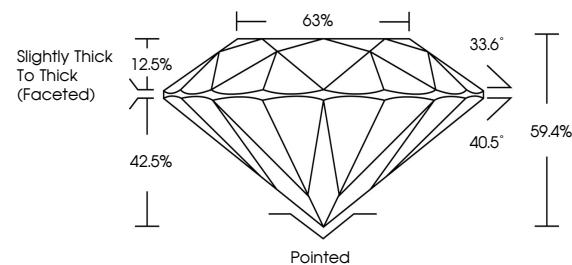
LG754510414  
Report verification at igi.org



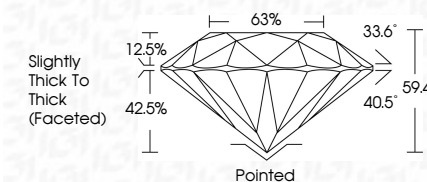
February 27, 2026  
IGI Report Number **LG754510414**  
Description **LABORATORY GROWN DIAMOND**  
Shape and Cutting Style **ROUND BRILLIANT**  
Measurements **7.56 - 7.59 X 4.49 MM**  
**GRADING RESULTS**  
Carat Weight **1.62 CARAT**  
Color Grade **G**  
Clarity Grade **VVS 2**  
Cut Grade **VERY GOOD**

February 27, 2026  
IGI Report Number **LG754510414**  
Description **LABORATORY GROWN DIAMOND**  
Shape and Cutting Style **ROUND BRILLIANT**  
Measurements **7.56 - 7.59 X 4.49 MM**  
**GRADING RESULTS**  
Carat Weight **1.62 CARAT**  
Color Grade **G**  
Clarity Grade **VVS 2**  
Cut Grade **VERY GOOD**

**PROPORTIONS**



Sample Image Used



**ADDITIONAL GRADING INFORMATION**

Polish **EXCELLENT**  
Symmetry **EXCELLENT**  
Fluorescence **NONE**  
Inscription(s) **IGI LG754510414**

Comments: This Laboratory Grown Diamond was created by Chemical Vapor Deposition (CVD) growth process. Type IIa

**ADDITIONAL GRADING INFORMATION**

Polish **EXCELLENT**  
Symmetry **EXCELLENT**  
Fluorescence **NONE**  
Inscription(s) **IGI LG754510414**  
Comments: This Laboratory Grown Diamond was created by Chemical Vapor Deposition (CVD) growth process. Type IIa

**COLOR**

D E F G H I J Faint Very Light Light

**CLARITY**

FL	IF	VVS <sup>1-2</sup>	VS <sup>1-2</sup>	SI <sup>1-2</sup>	I <sup>1-3</sup>
Flawless	Internally Flawless	Very Very Slightly Included	Very Slightly Included	Slightly Included	Included



**IGI**



February 27, 2026  
IGI Report No **LG754510414**  
**ROUND BRILLIANT**  
7.56 - 7.59 X 4.49 MM  
Carat Weight **1.62 CARAT**  
Color Grade **G**  
Clarity Grade **VVS 2**  
Cut Grade **VERY GOOD**  
Depth **59.4%**  
Table **12.5%**  
Girdle **42.5%**  
Crown Angle **33.6°**  
Pavilion Angle **40.5°**  
Girdle **Slightly Thick To Thick (Faceted)**  
Culet **Pointed**  
Polish **EXCELLENT**  
Symmetry **EXCELLENT**  
Fluorescence **NONE**  
Inscription(s) **IGI LG754510414**  
Comments: This Laboratory Grown Diamond was created by Chemical Vapor Deposition (CVD) growth process. Type IIa