



**ELECTRONIC COPY**

LG754510411  
Report verification at igi.org



February 27, 2026

IGI Report Number **LG754510411**

Description **LABORATORY GROWN DIAMOND**

Shape and Cutting Style **ROUND BRILLIANT**

Measurements **7.00 - 7.05 X 4.50 MM**

**GRADING RESULTS**

Carat Weight **1.41 CARAT**

Color Grade **G**

Clarity Grade **VS 2**

Cut Grade **VERY GOOD**

February 27, 2026

IGI Report Number **LG754510411**

Description **LABORATORY GROWN DIAMOND**

Shape and Cutting Style **ROUND BRILLIANT**

Measurements **7.00 - 7.05 X 4.50 MM**

**GRADING RESULTS**

Carat Weight **1.41 CARAT**

Color Grade **G**

Clarity Grade **VS 2**

Cut Grade **VERY GOOD**

**ADDITIONAL GRADING INFORMATION**

Polish **EXCELLENT**

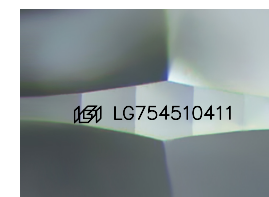
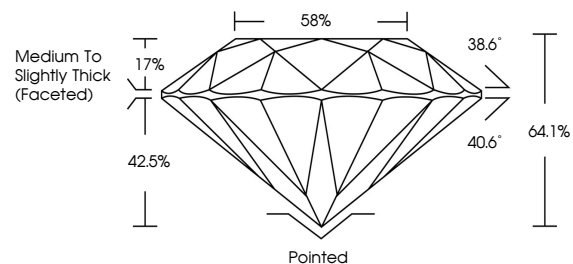
Symmetry **EXCELLENT**

Fluorescence **NONE**

Inscription(s) **LG754510411**

Comments: This Laboratory Grown Diamond was created by Chemical Vapor Deposition (CVD) growth process. Type IIa

**PROPORTIONS**



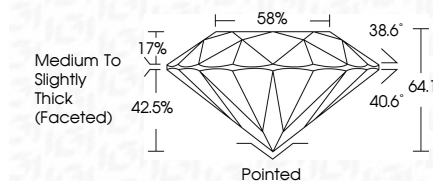
Sample Image Used

**COLOR**

D E F G H I J Faint Very Light Light

**CLARITY**

FL	IF	VS <sup>1-2</sup>	VS <sup>1-2</sup>	SI <sup>1-2</sup>	I <sup>1-3</sup>
Flawless	Internally Flawless	Very Very Slightly Included	Very Slightly Included	Slightly Included	Included



**ADDITIONAL GRADING INFORMATION**

Polish **EXCELLENT**

Symmetry **EXCELLENT**

Fluorescence **NONE**

Inscription(s) **LG754510411**

Comments: This Laboratory Grown Diamond was created by Chemical Vapor Deposition (CVD) growth process. Type IIa



**IGI**



February 27, 2026  
IGI Report No LG754510411  
**ROUND BRILLIANT**

Carat Weight **1.41 CARAT**  
Color Grade **G**

Clarity Grade **VS 2**  
Cut Grade **VERY GOOD**

Depth **64.1%**  
Table **17%**  
Girdle **Medium To Slightly Thick (Faceted)**

Culet **Pointed**  
Polish **EXCELLENT**  
Symmetry **EXCELLENT**  
Fluorescence **NONE**  
Inscription(s) **LG754510411**

Comments: This Laboratory Grown Diamond was created by Chemical Vapor Deposition (CVD) growth process. Type IIa