



ELECTRONIC COPY

LG754510406
Report verification at igi.org



February 27, 2026

IGI Report Number **LG754510406**

Description **LABORATORY GROWN DIAMOND**

Shape and Cutting Style **ROUND BRILLIANT**

Measurements **7.24 - 7.27 X 4.57 MM**

GRADING RESULTS

Carat Weight **1.52 CARAT**

Color Grade **I**

Clarity Grade **VVS 2**

Cut Grade **EXCELLENT**

February 27, 2026

IGI Report Number **LG754510406**

Description **LABORATORY GROWN DIAMOND**

Shape and Cutting Style **ROUND BRILLIANT**

Measurements **7.24 - 7.27 X 4.57 MM**

GRADING RESULTS

Carat Weight **1.52 CARAT**

Color Grade **I**

Clarity Grade **VVS 2**

Cut Grade **EXCELLENT**

ADDITIONAL GRADING INFORMATION

Polish **VERY GOOD**

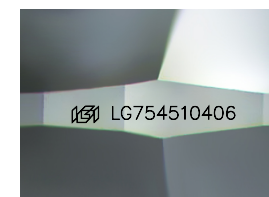
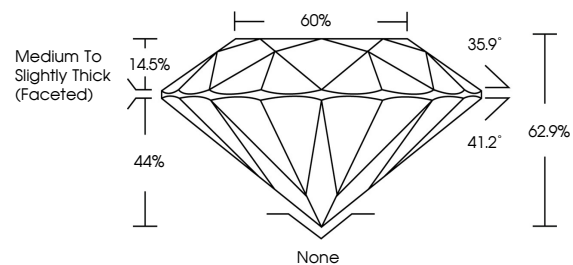
Symmetry **VERY GOOD**

Fluorescence **NONE**

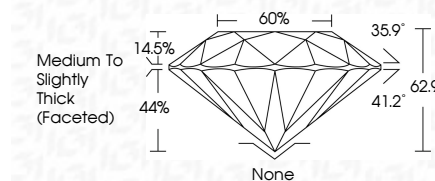
Inscription(s) **LG754510406**

Comments: This Laboratory Grown Diamond was created by Chemical Vapor Deposition (CVD) growth process. Type IIa

PROPORTIONS



Sample Image Used



COLOR

D E F G H I J Faint Very Light Light

CLARITY

FL	IF	VVS ¹⁻²	VS ¹⁻²	SI ¹⁻²	I ¹⁻³
Flawless	Internally Flawless	Very Very Slightly Included	Very Slightly Included	Slightly Included	Included

ADDITIONAL GRADING INFORMATION

Polish **VERY GOOD**

Symmetry **VERY GOOD**

Fluorescence **NONE**

Inscription(s) **LG754510406**

Comments: This Laboratory Grown Diamond was created by Chemical Vapor Deposition (CVD) growth process. Type IIa



IGI



February 27, 2026
IGI Report No LG754510406
ROUND BRILLIANT
7.24 - 7.27 X 4.57 MM
Carat Weight 1.52 CARAT
Color Grade I
Clarity Grade VVS 2
Cut Grade EXCELLENT
Depth 62.9%
Table 60%
Girdle Medium To Slightly Thick (Faceted)
Culet None
Polish VERY GOOD
Symmetry VERY GOOD
Fluorescence NONE
Inscriptions(s) IGI LG754510406
Comments: This Laboratory Grown Diamond was created by Chemical Vapor Deposition (CVD) growth process. Type IIa