



ELECTRONIC COPY

LG754510402
Report verification at igi.org



February 27, 2026

IGI Report Number **LG754510402**

Description **LABORATORY GROWN DIAMOND**

Shape and Cutting Style **ROUND BRILLIANT**

Measurements **7.48 - 7.51 X 4.78 MM**

GRADING RESULTS

Carat Weight **1.66 CARAT**

Color Grade **H**

Clarity Grade **VS 2**

Cut Grade **VERY GOOD**

February 27, 2026

IGI Report Number **LG754510402**

Description **LABORATORY GROWN DIAMOND**

Shape and Cutting Style **ROUND BRILLIANT**

Measurements **7.48 - 7.51 X 4.78 MM**

GRADING RESULTS

Carat Weight **1.66 CARAT**

Color Grade **H**

Clarity Grade **VS 2**

Cut Grade **VERY GOOD**

ADDITIONAL GRADING INFORMATION

Polish **VERY GOOD**

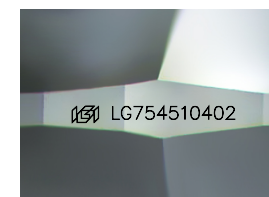
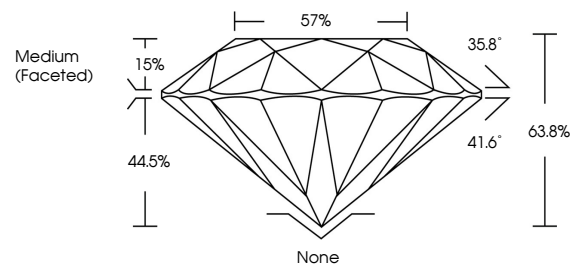
Symmetry **VERY GOOD**

Fluorescence **NONE**

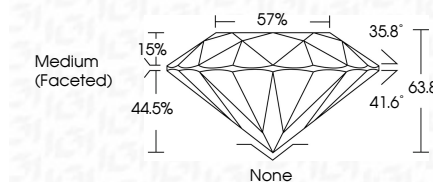
Inscription(s) **IGI LG754510402**

Comments: This Laboratory Grown Diamond was created by Chemical Vapor Deposition (CVD) growth process. Type IIa

PROPORTIONS



Sample Image Used



COLOR

D E F G H I J Faint Very Light Light

CLARITY

FL	IF	VS ¹⁻²	VS ¹⁻²	SI ¹⁻²	I ¹⁻³
Flawless	Internally Flawless	Very Very Slightly Included	Very Slightly Included	Slightly Included	Included

ADDITIONAL GRADING INFORMATION

Polish **VERY GOOD**

Symmetry **VERY GOOD**

Fluorescence **NONE**

Inscription(s) **IGI LG754510402**

Comments: This Laboratory Grown Diamond was created by Chemical Vapor Deposition (CVD) growth process. Type IIa



IGI



February 27, 2026	IGI Report No LG754510402	ROUND BRILLIANT	7.48 - 7.51 X 4.78 MM	1.66 CARAT	H	VS 2	VERY GOOD	63.8%	57%	Medium (Faceted)	None	VERY GOOD	VERY GOOD	NONE	IGI LG754510402
<p>Comments: This Laboratory Grown Diamond was created by Chemical Vapor Deposition (CVD) growth process. Type IIa</p>															