



ELECTRONIC COPY

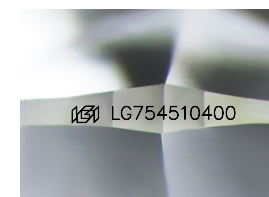
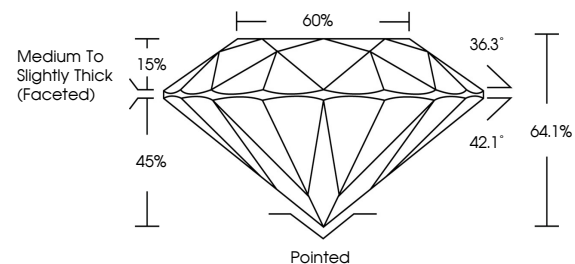
LG754510400
Report verification at igi.org



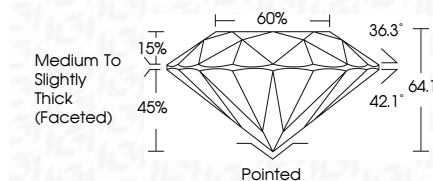
February 27, 2026
IGI Report Number **LG754510400**
Description **LABORATORY GROWN DIAMOND**
Shape and Cutting Style **ROUND BRILLIANT**
Measurements **7.58 - 7.60 X 4.86 MM**
GRADING RESULTS
Carat Weight **1.74 CARAT**
Color Grade **I**
Clarity Grade **VVS 2**
Cut Grade **VERY GOOD**

February 27, 2026
IGI Report Number **LG754510400**
Description **LABORATORY GROWN DIAMOND**
Shape and Cutting Style **ROUND BRILLIANT**
Measurements **7.58 - 7.60 X 4.86 MM**
GRADING RESULTS
Carat Weight **1.74 CARAT**
Color Grade **I**
Clarity Grade **VVS 2**
Cut Grade **VERY GOOD**

PROPORTIONS



Sample Image Used



ADDITIONAL GRADING INFORMATION
Polish **EXCELLENT**
Symmetry **VERY GOOD**
Fluorescence **NONE**
Inscription(s) **IGI LG754510400**

Comments: This Laboratory Grown Diamond was created by Chemical Vapor Deposition (CVD) growth process. Type IIa

COLOR

D E F G H I J Faint Very Light Light

CLARITY

FL	IF	VS ¹⁻²	VS ¹⁻²	SI ¹⁻²	I ¹⁻³
Flawless	Internally Flawless	Very Very Slightly Included	Very Slightly Included	Slightly Included	Included

ADDITIONAL GRADING INFORMATION

Polish **EXCELLENT**
Symmetry **VERY GOOD**
Fluorescence **NONE**
Inscription(s) **IGI LG754510400**
Comments: This Laboratory Grown Diamond was created by Chemical Vapor Deposition (CVD) growth process. Type IIa



IGI



February 27, 2026
IGI Report No LG754510400
ROUND BRILLIANT
7.58 - 7.60 X 4.86 MM
1.74 CARAT
Color Grade **I**
Clarity Grade **VVS 2**
Depth **64.1%**
Table **60%**
Medium To Slightly Thick (Faceted)
Culet **Pointed**
Polish **EXCELLENT**
Symmetry **VERY GOOD**
Fluorescence **NONE**
Inscription(s) **IGI LG754510400**
Comments: This Laboratory Grown Diamond was created by Chemical Vapor Deposition (CVD) growth process. Type IIa