



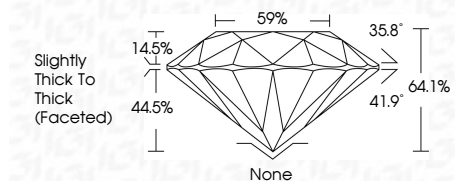
ELECTRONIC COPY

LG754510397
Report verification at igi.org



February 27, 2026
IGI Report Number **LG754510397**
Description **LABORATORY GROWN DIAMOND**
Shape and Cutting Style **ROUND BRILLIANT**
Measurements **7.38 - 7.43 X 4.76 MM**

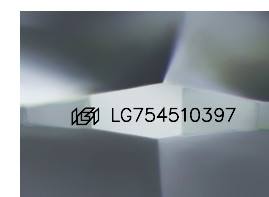
GRADING RESULTS
Carat Weight **1.64 CARAT**
Color Grade **H**
Clarity Grade **VS 2**
Cut Grade **VERY GOOD**



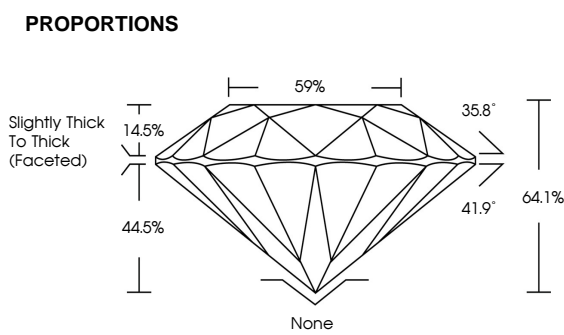
ADDITIONAL GRADING INFORMATION
Polish **EXCELLENT**
Symmetry **EXCELLENT**
Fluorescence **NONE**
Inscription(s) **IGI LG754510397**
Comments: This Laboratory Grown Diamond was created by Chemical Vapor Deposition (CVD) growth process. Type IIa



February 27, 2026
IGI Report No LG754510397
ROUND BRILLIANT
7.38 - 7.43 X 4.76 MM
1.64 CARAT
H
Color Grade
VS 2
VERY GOOD
64.1%
59%
Slightly Thick To Thick (Faceted)
None
EXCELLENT
EXCELLENT
NONE
IGI LG754510397
Comments: This Laboratory Grown Diamond was created by Chemical Vapor Deposition (CVD) growth process. Type IIa



Sample Image Used



COLOR

D	E	F	G	H	I	J	Faint	Very Light	Light
---	---	---	---	---	---	---	-------	------------	-------

CLARITY

FL	IF	VS ¹⁻²	VS ¹⁻²	SI ¹⁻²	I ¹⁻³
Flawless	Internally Flawless	Very Very Slightly Included	Very Slightly Included	Slightly Included	Included



February 27, 2026
IGI Report Number **LG754510397**
Description **LABORATORY GROWN DIAMOND**
Shape and Cutting Style **ROUND BRILLIANT**
Measurements **7.38 - 7.43 X 4.76 MM**
GRADING RESULTS
Carat Weight **1.64 CARAT**
Color Grade **H**
Clarity Grade **VS 2**
Cut Grade **VERY GOOD**
ADDITIONAL GRADING INFORMATION
Polish **EXCELLENT**
Symmetry **EXCELLENT**
Fluorescence **NONE**
Inscription(s) **IGI LG754510397**
Comments: This Laboratory Grown Diamond was created by Chemical Vapor Deposition (CVD) growth process. Type IIa