



ELECTRONIC COPY

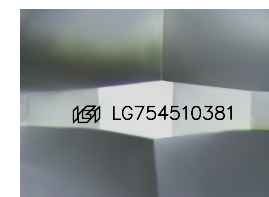
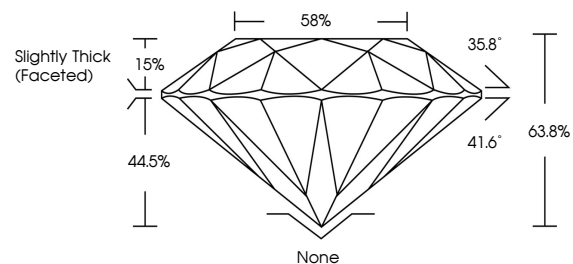
LG754510381
Report verification at igi.org



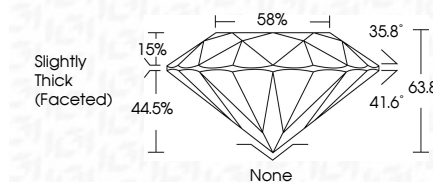
February 27, 2026
IGI Report Number **LG754510381**
Description **LABORATORY GROWN DIAMOND**
Shape and Cutting Style **ROUND BRILLIANT**
Measurements **7.46 - 7.53 X 4.78 MM**
GRADING RESULTS
Carat Weight **1.67 CARAT**
Color Grade **H**
Clarity Grade **VS 1**
Cut Grade **VERY GOOD**

February 27, 2026
IGI Report Number **LG754510381**
Description **LABORATORY GROWN DIAMOND**
Shape and Cutting Style **ROUND BRILLIANT**
Measurements **7.46 - 7.53 X 4.78 MM**
GRADING RESULTS
Carat Weight **1.67 CARAT**
Color Grade **H**
Clarity Grade **VS 1**
Cut Grade **VERY GOOD**

PROPORTIONS



Sample Image Used



ADDITIONAL GRADING INFORMATION

Polish **EXCELLENT**
Symmetry **EXCELLENT**
Fluorescence **NONE**
Inscription(s) **IGI LG754510381**

Comments: This Laboratory Grown Diamond was created by Chemical Vapor Deposition (CVD) growth process. Type IIa

COLOR

D E F G H I J Faint Very Light Light

CLARITY

FL	IF	VS ¹⁻²	VS ¹⁻²	SI ¹⁻²	I ¹⁻³
Flawless	Internally Flawless	Very Very Slightly Included	Very Slightly Included	Slightly Included	Included

ADDITIONAL GRADING INFORMATION

Polish **EXCELLENT**
Symmetry **EXCELLENT**
Fluorescence **NONE**
Inscription(s) **IGI LG754510381**
Comments: This Laboratory Grown Diamond was created by Chemical Vapor Deposition (CVD) growth process. Type IIa



IGI



February 27, 2026
IGI Report No LG754510381
ROUND BRILLIANT
7.46 - 7.53 X 4.78 MM
1.67 CARAT
H
Color Grade
VS 1
VERY GOOD
63.8%
88%
Slightly Thick (Faceted)
None
EXCELLENT
EXCELLENT
NONE
IGI LG754510381
Comments: This Laboratory Grown Diamond was created by Chemical Vapor Deposition (CVD) growth process. Type IIa