



**ELECTRONIC COPY**

LG754510369  
Report verification at igi.org



February 27, 2026  
IGI Report Number **LG754510369**  
Description **LABORATORY GROWN DIAMOND**  
Shape and Cutting Style **ROUND BRILLIANT**  
Measurements **8.37 - 8.41 X 5.09 MM**  
**GRADING RESULTS**  
Carat Weight **2.21 CARATS**  
Color Grade **I**  
Clarity Grade **VS 2**  
Cut Grade **EXCELLENT**

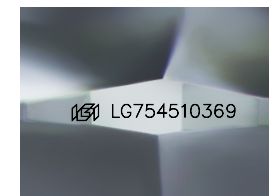
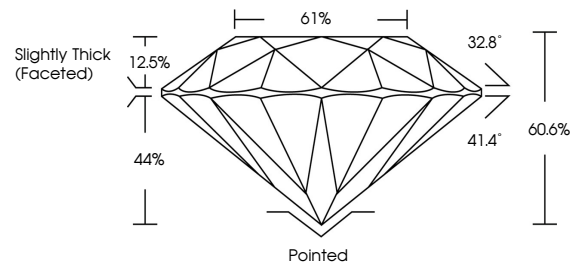
February 27, 2026  
IGI Report Number **LG754510369**  
Description **LABORATORY GROWN DIAMOND**  
Shape and Cutting Style **ROUND BRILLIANT**  
Measurements **8.37 - 8.41 X 5.09 MM**  
**GRADING RESULTS**  
Carat Weight **2.21 CARATS**  
Color Grade **I**  
Clarity Grade **VS 2**  
Cut Grade **EXCELLENT**

**ADDITIONAL GRADING INFORMATION**

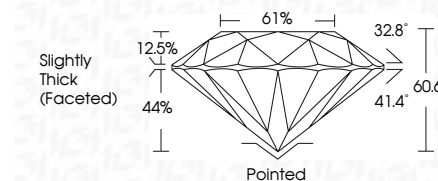
Polish **EXCELLENT**  
Symmetry **EXCELLENT**  
Fluorescence **NONE**  
Inscription(s) **LG754510369**

Comments: This Laboratory Grown Diamond was created by Chemical Vapor Deposition (CVD) growth process. Type IIa

**PROPORTIONS**



Sample Image Used



**COLOR**

D E F G H I J Faint Very Light Light

**CLARITY**

| FL       | IF                  | VS <sup>1-2</sup>           | VS <sup>1-2</sup>      | SI <sup>1-2</sup> | I <sup>1-3</sup> |
|----------|---------------------|-----------------------------|------------------------|-------------------|------------------|
| Flawless | Internally Flawless | Very Very Slightly Included | Very Slightly Included | Slightly Included | Included         |

**ADDITIONAL GRADING INFORMATION**

Polish **EXCELLENT**  
Symmetry **EXCELLENT**  
Fluorescence **NONE**  
Inscription(s) **LG754510369**  
Comments: This Laboratory Grown Diamond was created by Chemical Vapor Deposition (CVD) growth process. Type IIa



**IGI**



February 27, 2026  
IGI Report No LG754510369  
**ROUND BRILLIANT**  
8.37 - 8.41 X 5.09 MM  
2.21 CARATS  
Color Grade **I**  
Clarity Grade **VS 2**  
Depth **60.6%**  
Table **12.5%**  
Girdle **Slightly Thick (Faceted)**  
Culet **Pointed**  
Polish **EXCELLENT**  
Symmetry **EXCELLENT**  
Fluorescence **NONE**  
Inscriptions(s) LG754510369  
Comments: This Laboratory Grown Diamond was created by Chemical Vapor Deposition (CVD) growth process. Type IIa