



**ELECTRONIC COPY**

LG754510366  
Report verification at igi.org



February 27, 2026

IGI Report Number **LG754510366**

Description **LABORATORY GROWN DIAMOND**

Shape and Cutting Style **ROUND BRILLIANT**

Measurements **7.44 - 7.52 X 4.76 MM**

**GRADING RESULTS**

Carat Weight **1.67 CARAT**

Color Grade **G**

Clarity Grade **SI 1**

Cut Grade **VERY GOOD**

February 27, 2026

IGI Report Number **LG754510366**

Description **LABORATORY GROWN DIAMOND**

Shape and Cutting Style **ROUND BRILLIANT**

Measurements **7.44 - 7.52 X 4.76 MM**

**GRADING RESULTS**

Carat Weight **1.67 CARAT**

Color Grade **G**

Clarity Grade **SI 1**

Cut Grade **VERY GOOD**

**ADDITIONAL GRADING INFORMATION**

Polish **EXCELLENT**

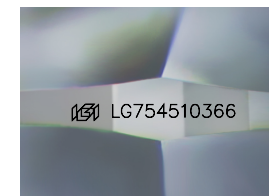
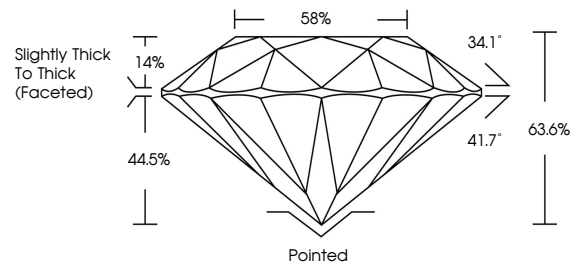
Symmetry **EXCELLENT**

Fluorescence **NONE**

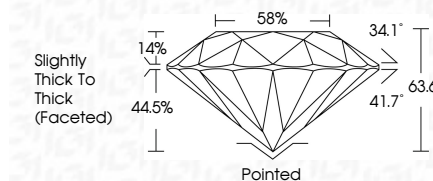
Inscription(s) **LG754510366**

Comments: This Laboratory Grown Diamond was created by Chemical Vapor Deposition (CVD) growth process. Type IIa

**PROPORTIONS**



Sample Image Used



**COLOR**

D E F G H I J Faint Very Light Light

**CLARITY**

FL	IF	VS <sup>1-2</sup>	VS <sup>1-2</sup>	SI <sup>1-2</sup>	I <sup>1-3</sup>
Flawless	Internally Flawless	Very Very Slightly Included	Very Slightly Included	Slightly Included	Included

**ADDITIONAL GRADING INFORMATION**

Polish **EXCELLENT**

Symmetry **EXCELLENT**

Fluorescence **NONE**

Inscription(s) **LG754510366**

Comments: This Laboratory Grown Diamond was created by Chemical Vapor Deposition (CVD) growth process. Type IIa



**IGI**



February 27, 2026  
IGI Report No LG754510366  
ROUND BRILLIANT

7.44 - 7.52 X 4.76 MM  
1.67 CARAT  
G  
SI 1  
VERY GOOD  
63.6%  
88%  
Slightly Thick To Thick (Faceted)

Pointed  
EXCELLENT  
EXCELLENT  
NONE  
IGI LG754510366

Comments: This Laboratory Grown Diamond was created by Chemical Vapor Deposition (CVD) growth process. Type IIa