



**ELECTRONIC COPY**

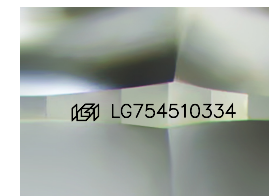
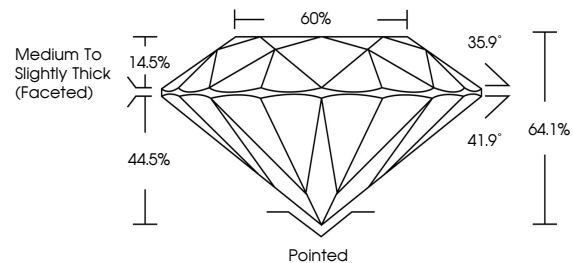
LG754510334  
Report verification at [igi.org](http://igi.org)



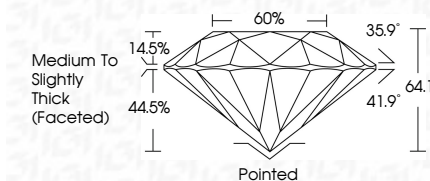
February 27, 2026  
IGI Report Number **LG754510334**  
Description **LABORATORY GROWN DIAMOND**  
Shape and Cutting Style **ROUND BRILLIANT**  
Measurements **7.41 - 7.45 X 4.76 MM**  
**GRADING RESULTS**  
Carat Weight **1.65 CARAT**  
Color Grade **J**  
Clarity Grade **VVS 2**  
Cut Grade **VERY GOOD**

February 27, 2026  
IGI Report Number **LG754510334**  
Description **LABORATORY GROWN DIAMOND**  
Shape and Cutting Style **ROUND BRILLIANT**  
Measurements **7.41 - 7.45 X 4.76 MM**  
**GRADING RESULTS**  
Carat Weight **1.65 CARAT**  
Color Grade **J**  
Clarity Grade **VVS 2**  
Cut Grade **VERY GOOD**

**PROPORTIONS**



Sample Image Used



**ADDITIONAL GRADING INFORMATION**

Polish **EXCELLENT**  
Symmetry **EXCELLENT**  
Fluorescence **NONE**  
Inscription(s) **IGI LG754510334**

Comments: This Laboratory Grown Diamond was created by Chemical Vapor Deposition (CVD) growth process. Type IIa

**ADDITIONAL GRADING INFORMATION**

Polish **EXCELLENT**  
Symmetry **EXCELLENT**  
Fluorescence **NONE**  
Inscription(s) **IGI LG754510334**  
Comments: This Laboratory Grown Diamond was created by Chemical Vapor Deposition (CVD) growth process. Type IIa

**COLOR**

D E F G H I J Faint Very Light Light

**CLARITY**

FL IF VS<sup>1-2</sup> VS<sup>1-2</sup> SI<sup>1-2</sup> I<sup>1-3</sup>  
Flawless Internally Flawless Very Very Slightly Included Very Slightly Included Slightly Included Included



**IGI**



February 27, 2026  
IGI Report No LG754510334  
**ROUND BRILLIANT**  
7.41 - 7.45 X 4.76 MM  
1.65 CARAT  
J  
Color Grade  
VVS 2  
VERY GOOD  
64.1%  
60%  
Medium To Slightly Thick (Faceted)  
Pointed  
EXCELLENT  
EXCELLENT  
NONE  
IGI LG754510334  
Comments: This Laboratory Grown Diamond was created by Chemical Vapor Deposition (CVD) growth process. Type IIa