



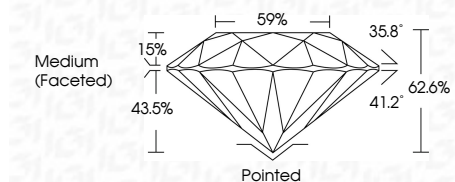
ELECTRONIC COPY

LG754510333
Report verification at igi.org



February 27, 2026
IGI Report Number **LG754510333**
Description **LABORATORY GROWN DIAMOND**
Shape and Cutting Style **ROUND BRILLIANT**
Measurements **6.31 - 6.38 X 3.98 MM**

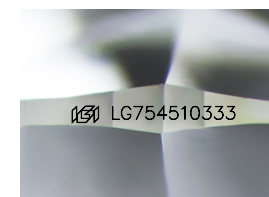
GRADING RESULTS
Carat Weight **1.00 CARAT**
Color Grade **G**
Clarity Grade **SI 1**
Cut Grade **EXCELLENT**



ADDITIONAL GRADING INFORMATION
Polish **VERY GOOD**
Symmetry **EXCELLENT**
Fluorescence **NONE**
Inscription(s) **IGI LG754510333**
Comments: This Laboratory Grown Diamond was created by Chemical Vapor Deposition (CVD) growth process. Type IIa

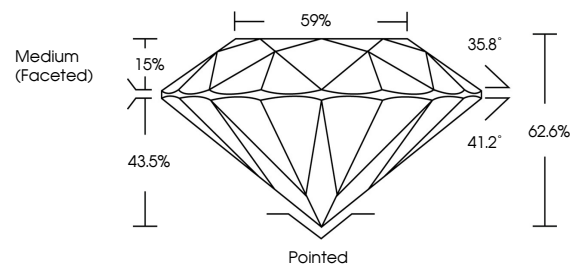


February 27, 2026
IGI Report No LG754510333
ROUND BRILLIANT
6.31 - 6.38 X 3.98 MM
1.00 CARAT
Color Grade **G**
Clarity Grade **SI 1**
Depth **EXCELLENT**
Table **62.6%**
Girdle **59%**
Medium (Faceted)
Culet **Pointed**
Polish **VERY GOOD**
Symmetry **EXCELLENT**
Fluorescence **NONE**
Inscriptions(s) **IGI LG754510333**
Comments: This Laboratory Grown Diamond was created by Chemical Vapor Deposition (CVD) growth process. Type IIa



Sample Image Used

PROPORTIONS



COLOR

D E F G H I J Faint Very Light Light

CLARITY

FL	IF	VS ¹⁻²	VS ¹⁻²	SI ¹⁻²	I ¹⁻³
Flawless	Internally Flawless	Very Very Slightly Included	Very Slightly Included	Slightly Included	Included

