



ELECTRONIC COPY

LG754510328
Report verification at igi.org



February 27, 2026

IGI Report Number **LG754510328**

Description **LABORATORY GROWN DIAMOND**

Shape and Cutting Style **ROUND BRILLIANT**

Measurements **6.75 - 6.79 X 4.21 MM**

GRADING RESULTS

Carat Weight **1.21 CARAT**

Color Grade **H**

Clarity Grade **VS 1**

Cut Grade **EXCELLENT**

February 27, 2026

IGI Report Number **LG754510328**

Description **LABORATORY GROWN DIAMOND**

Shape and Cutting Style **ROUND BRILLIANT**

Measurements **6.75 - 6.79 X 4.21 MM**

GRADING RESULTS

Carat Weight **1.21 CARAT**

Color Grade **H**

Clarity Grade **VS 1**

Cut Grade **EXCELLENT**

ADDITIONAL GRADING INFORMATION

Polish **VERY GOOD**

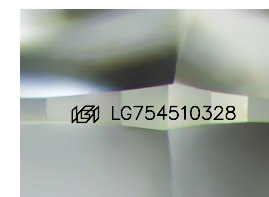
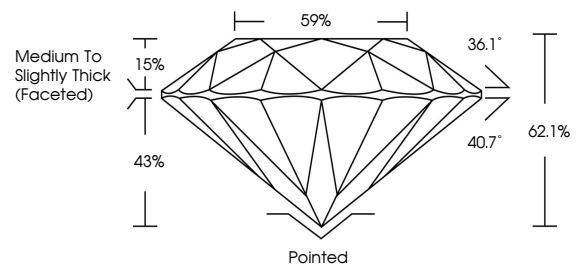
Symmetry **VERY GOOD**

Fluorescence **NONE**

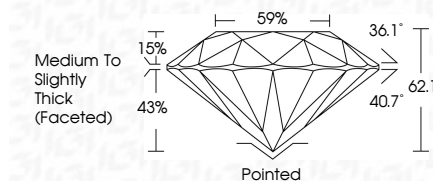
Inscription(s) **LG754510328**

Comments: This Laboratory Grown Diamond was created by Chemical Vapor Deposition (CVD) growth process. Type IIa

PROPORTIONS



Sample Image Used



COLOR

D E F G H I J Faint Very Light Light

CLARITY

FL	IF	VS ¹⁻²	VS ¹⁻²	SI ¹⁻²	I ¹⁻³
Flawless	Internally Flawless	Very Very Slightly Included	Very Slightly Included	Slightly Included	Included

ADDITIONAL GRADING INFORMATION

Polish **VERY GOOD**

Symmetry **VERY GOOD**

Fluorescence **NONE**

Inscription(s) **LG754510328**

Comments: This Laboratory Grown Diamond was created by Chemical Vapor Deposition (CVD) growth process. Type IIa



IGI



February 27, 2026
IGI Report No LG754510328
ROUND BRILLIANT

1.21 CARAT
Color Grade **H**
Clarity Grade **VS 1**
Depth **EXCELLENT**
Table **62.1%**
Girdle **59%**
Medium To Slightly Thick (Faceted)

Pointed
Polish **VERY GOOD**
Symmetry **VERY GOOD**
Fluorescence **NONE**
Inscription(s) **LG754510328**

Comments: This Laboratory Grown Diamond was created by Chemical Vapor Deposition (CVD) growth process. Type IIa