



ELECTRONIC COPY

LG754510099
Report verification at igi.org

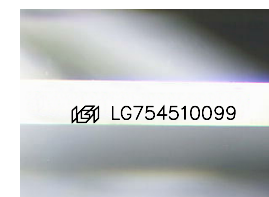


February 11, 2026
IGI Report Number **LG754510099**
Description **LABORATORY GROWN DIAMOND**
Shape and Cutting Style **CUT CORNERED
RECTANGULAR MODIFIED
BRILLIANT**

Measurements **8.96 X 5.57 X 3.86 MM**

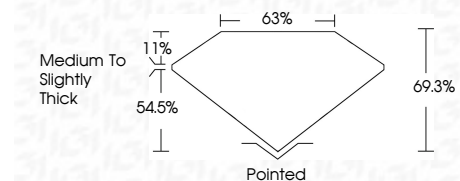
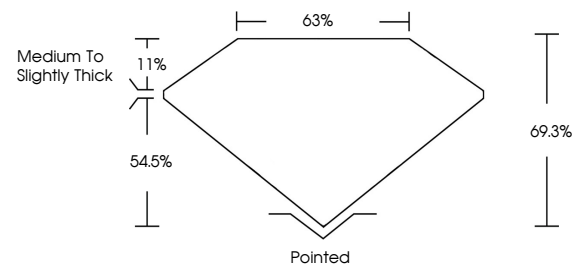
GRADING RESULTS

Carat Weight **1.61 CARAT**
Color Grade **F**
Clarity Grade **VS 1**



Sample Image Used

PROPORTIONS



ADDITIONAL GRADING INFORMATION

Polish **EXCELLENT**
Symmetry **EXCELLENT**
Fluorescence **NONE**
Inscription(s) **(IGI) LG754510099**
Comments: This Laboratory Grown Diamond was created by Chemical Vapor Deposition (CVD) growth process. Type IIa



February 11, 2026
IGI Report No LG754510099
CUT CORNERED RECT. MODIFIED BRILLIANT
8.96 X 5.57 X 3.86 MM
1.61 CARAT
F
VS 1
69.3%
54.5%
Medium to Slightly Thick
Pointed
EXCELLENT
EXCELLENT
NONE
(IGI) LG754510099
Comments: This Laboratory Grown Diamond was created by Chemical Vapor Deposition (CVD) growth process. Type IIa

February 11, 2026
IGI Report Number **LG754510099**
Description **LABORATORY GROWN DIAMOND**
Shape and Cutting Style **CUT CORNERED RECTANGULAR
MODIFIED BRILLIANT**
Measurements **8.96 X 5.57 X 3.86 MM**
GRADING RESULTS
Carat Weight **1.61 CARAT**
Color Grade **F**
Clarity Grade **VS 1**
ADDITIONAL GRADING INFORMATION
Polish **EXCELLENT**
Symmetry **EXCELLENT**
Fluorescence **NONE**
Inscription(s) **(IGI) LG754510099**
Comments: This Laboratory Grown Diamond was created by Chemical Vapor Deposition (CVD) growth process. Type IIa