



ELECTRONIC COPY

LG754509569
Report verification at igi.org



December 12, 2025
IGI Report Number **LG754509569**
Description **LABORATORY GROWN DIAMOND**
Shape and Cutting Style **CUT CORNERED
RECTANGULAR MIXED CUT**
Measurements **9.64 X 7.06 X 4.91 MM**
GRADING RESULTS
Carat Weight **3.07 CARATS**
Color Grade **FANCY INTENSE YELLOW**
Clarity Grade **VS 2**

LABORATORY GROWN DIAMOND REPORT

December 12, 2025
IGI Report Number **LG754509569**
Description **LABORATORY GROWN DIAMOND**
Shape and Cutting Style **CUT CORNERED RECTANGULAR
MIXED CUT**
Measurements **9.64 X 7.06 X 4.91 MM**

GRADING RESULTS

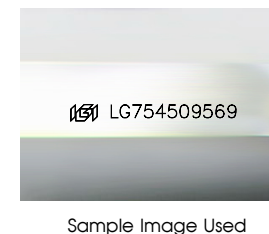
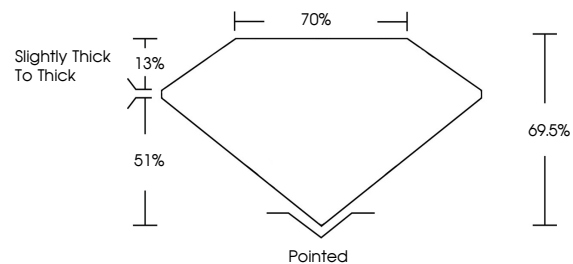
Carat Weight **3.07 CARATS**
Color Grade **FANCY INTENSE YELLOW**
Clarity Grade **VS 2**

ADDITIONAL GRADING INFORMATION

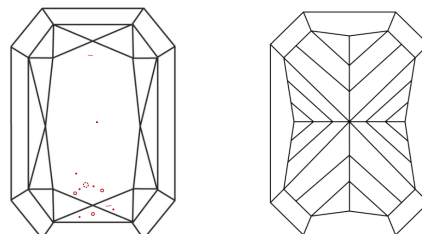
Polish **EXCELLENT**
Symmetry **EXCELLENT**
Fluorescence **NONE**
Inscription(s) **IGI LG754509569**

Comments: This Laboratory Grown Diamond was created by Chemical Vapor Deposition (CVD) growth process.

PROPORTIONS



CLARITY CHARACTERISTICS



KEY TO SYMBOLS

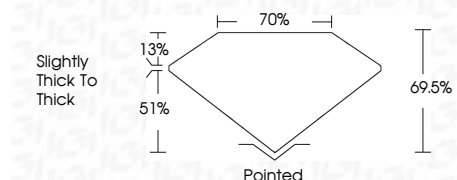
Red symbols indicate internal characteristics.
Green symbols indicate external characteristics.

COLOR

D E F G H I J Faint Very Light Light

CLARITY

FL	IF	VS ¹⁻²	VS ¹⁻²	SI ¹⁻²	I ¹⁻³
Flawless	Internally Flawless	Very Very Slightly Included	Very Slightly Included	Slightly Included	Included



ADDITIONAL GRADING INFORMATION

Polish **EXCELLENT**
Symmetry **EXCELLENT**
Fluorescence **NONE**
Inscription(s) **IGI LG754509569**
Comments: This Laboratory Grown Diamond was created by Chemical Vapor Deposition (CVD) growth process.



December 12, 2025
IGI Report No. LG754509569
CUT CORNERED RECT. MIXED CUT
9.64 X 7.06 X 4.91 MM
3.07 CARATS
FANCY INTENSE YELLOW
VS 2
69.5%
70%
Slightly thick to thick
Pointed
EXCELLENT
EXCELLENT
NONE
IGI LG754509569
Comments: This Laboratory Grown Diamond was created by Chemical Vapor Deposition (CVD) growth process.