



ELECTRONIC COPY

LG754509437
Report verification at igi.org



December 10, 2025
IGI Report Number **LG754509437**
Description **LABORATORY GROWN DIAMOND**
Shape and Cutting Style **CUT CORNERED
RECTANGULAR MIXED CUT**
Measurements **10.95 X 7.91 X 5.31 MM**
GRADING RESULTS
Carat Weight **4.31 CARATS**
Color Grade **FANCY INTENSE YELLOW**
Clarity Grade **VVS 2**

LABORATORY GROWN DIAMOND REPORT

December 10, 2025
IGI Report Number **LG754509437**
Description **LABORATORY GROWN DIAMOND**
Shape and Cutting Style **CUT CORNERED RECTANGULAR
MIXED CUT**
Measurements **10.95 X 7.91 X 5.31 MM**

GRADING RESULTS

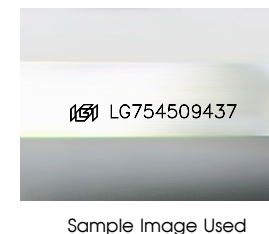
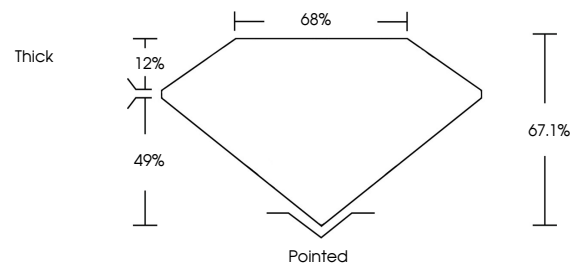
Carat Weight **4.31 CARATS**
Color Grade **FANCY INTENSE YELLOW**
Clarity Grade **VVS 2**

ADDITIONAL GRADING INFORMATION

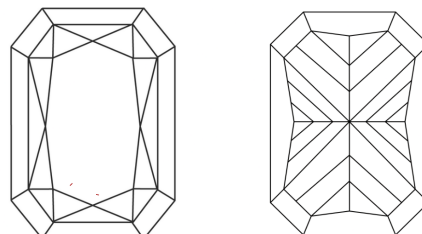
Polish **EXCELLENT**
Symmetry **EXCELLENT**
Fluorescence **NONE**
Inscription(s) **IGI LG754509437**

Comments: This Laboratory Grown Diamond was created by Chemical Vapor Deposition (CVD) growth process.

PROPORTIONS



CLARITY CHARACTERISTICS



KEY TO SYMBOLS

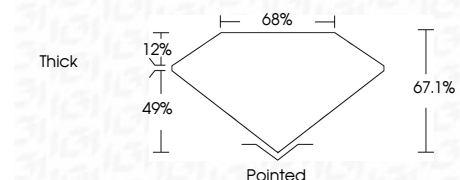
Red symbols indicate internal characteristics.
Green symbols indicate external characteristics.

COLOR

D E F G H I J Faint Very Light Light

CLARITY

FL	IF	VVS ¹⁻²	VS ¹⁻²	SI ¹⁻²	I ¹⁻³
Flawless	Internally Flawless	Very Very Slightly Included	Very Slightly Included	Slightly Included	Included



ADDITIONAL GRADING INFORMATION

Polish **EXCELLENT**
Symmetry **EXCELLENT**
Fluorescence **NONE**
Inscription(s) **IGI LG754509437**
Comments: This Laboratory Grown Diamond was created by Chemical Vapor Deposition (CVD) growth process.



December 10, 2025
IGI Report No. LG754509437
CUT CORNERED RECT. MIXED CUT
4.31 CARATS
FANCY INTENSE YELLOW
VVS 2
67.1%
68%
Thick
Pointed
EXCELLENT
EXCELLENT
NONE
IGI LG754509437
Comments: This Laboratory Grown Diamond was created by Chemical Vapor Deposition (CVD) growth process.