



ELECTRONIC COPY

LG754508219
Report verification at igi.org



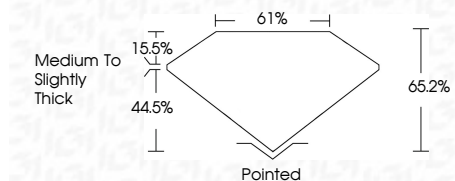
December 29, 2025
IGI Report Number LG754508219
Description LABORATORY GROWN DIAMOND

Shape and Cutting Style CUT CORNERED RECTANGULAR MODIFIED BRILLIANT

Measurements 11.64 X 7.92 X 5.16 MM

GRADING RESULTS

Carat Weight 4.08 CARATS
Color Grade D
Clarity Grade FLAWLESS



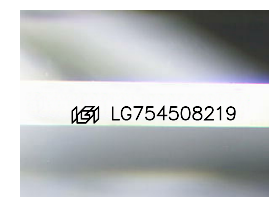
ADDITIONAL GRADING INFORMATION

Polish EXCELLENT
Symmetry EXCELLENT
Fluorescence NONE

Inscription(s) IGI LG754508219
Comments: As Grown - No indication of post-growth treatment.
This Laboratory Grown Diamond was created by High Pressure High Temperature (HPHT) growth process. Type II

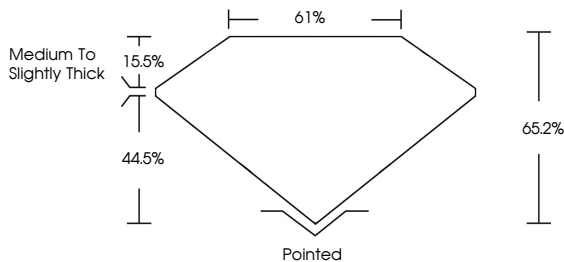


December 29, 2025
IGI Report No LG754508219
CUT CORNERED RECT. MODIFIED BRILLIANT
4.08 CARATS D
FLAWLESS
65.2% 61%
Medium to Slightly Thick
Pointed
EXCELLENT EXCELLENT NONE
None
IGI LG754508219
Comments: As Grown - No indication of post-growth treatment. This Laboratory Grown Diamond was created by High Pressure High Temperature (HPHT) growth process. Type II

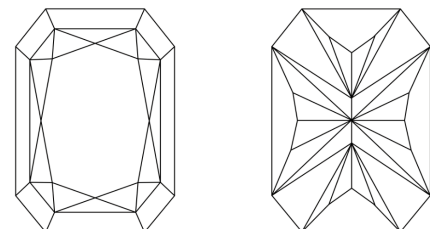


Sample Image Used

PROPORTIONS



CLARITY CHARACTERISTICS



KEY TO SYMBOLS

Red symbols indicate internal characteristics.
Green symbols indicate external characteristics.

COLOR

D E F G H I J Faint Very Light Light

CLARITY

FL IF VS 1-2 VS 1-2 SI 1-2 I 1-3
Flawless Internally Flawless Very Very Slightly Included Very Slightly Included Slightly Included Included

