



**ELECTRONIC COPY**

## LABORATORY GROWN DIAMOND REPORT

December 4, 2025	
IGI Report Number	LG754506295
Description	LABORATORY GROWN DIAMOND
Shape and Cutting Style	ROUND BRILLIANT
Measurements	9.20 - 9.25 X 5.55 MM

## GRADING RESULTS

Carat Weight	2.87 CARATS
Color Grade	G
Clarity Grade	VS 1
Cut Grade	IDEAL

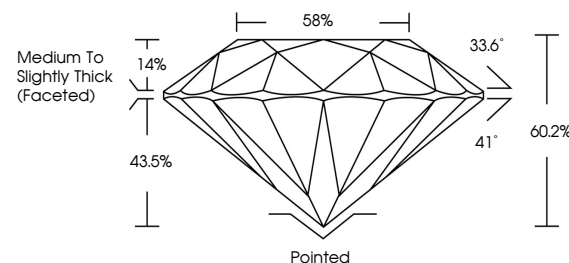
### ADDITIONAL GRADING INFORMATION

Polish	EXCELLENT
Symmetry	EXCELLENT
Fluorescence	NONE
Inscription(s)	151 LG754506295

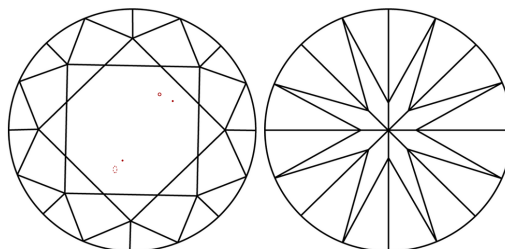
Comments: This Laboratory Grown Diamond was created by Chemical Vapor Deposition (CVD) growth process.  
Type IIa

LG754506295  
Report verification at [igi.org](https://igi.org)

## PROPORTIONS

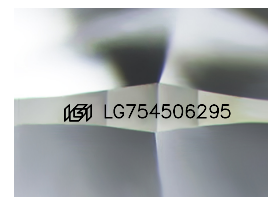


## CLARITY CHARACTERISTICS



### KEY TO SYMBOLS

Red symbols indicate internal characteristics.  
Green symbols indicate external characteristics.



Sample Image Used

## COLOR

D E F G H I J Faint Very Light Light

## CLARITY

FL	IF	VVS <sup>1-2</sup>	VS <sup>1-2</sup>	SI <sup>1-2</sup>	I <sup>1-3</sup>
Flawless	Internally Flawless	Very Very Slightly Included	Very Slightly Included	Slightly Included	Included

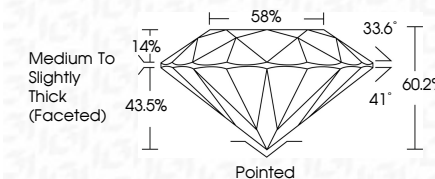
## LABORATORY GROWN DIAMOND REPORT



December 4, 2025	
IGI Report Number	LG754506295
Description	LABORATORY GROWN DIAMOND
Shape and Cutting Style	ROUND BRILLIANT
Measurements	9.20 - 9.25 X 5.55 MM

## GRADING RESULTS

Carat Weight	2.87 CARATS
Color Grade	G
Clarity Grade	VS 1
Cut Grade	IDEAL



### ADDITIONAL GRADING INFORMATION

Polish	EXCELLENT
Symmetry	EXCELLENT
Fluorescence	NONE
Inscription(s)	 LG754506295
<p>Comments: This Laboratory Grown Diamond was created by Chemical Vapor Deposition (CVD) growth process.</p> <p>Type IIa</p>	



© IGI 2020, International Gemological Institute

FD - 10 20



THIS DOCUMENT WAS PRODUCED WITH THE FOLLOWING SECURITY MEASURES: SPECIAL DOCUMENT PAPER, INK SCREENS, WATERMARK, BACKGROUND DESIGNS, HOLOGRAM AND OTHER SECURITY FEATURES NOT LISTED AND DO EXCEED DOCUMENT SECURITY INDUSTRY GUIDELINES

**www.igi.org**

December 4, 2005	2.02 - 0.25 X 5.55 MM	Color Weight	2.87 CARATS
GI Report No. LG754560295		Color Grade	G
ROUND BRILLIANT		Clarity Grade	VS 1
		Carat Grade	IDEAL
		Depth	60.2%
		Table	59%
		Girdle	Medium to Slightly Thick (Faceted)
		Culet	Pointed
		Polish	EXCELLENT
		Symmetry	EXCELLENT
		Fluorescence	NONE
		Inscriptions(s)	1691 LG754560295

Comments:  
 Natural Color Diamond was  
 treated by Chemical Vapor Deposition  
 (CVD) growth process.  
 Type IIa