



**ELECTRONIC COPY**

LG754505017  
Report verification at igi.org



December 10, 2025

IGI Report Number **LG754505017**

Description **LABORATORY GROWN DIAMOND**

Shape and Cutting Style **EMERALD CUT**

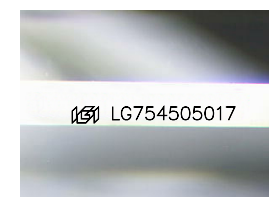
Measurements **8.02 X 5.35 X 3.65 MM**

**GRADING RESULTS**

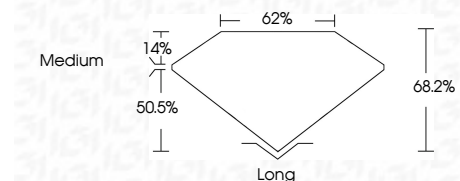
Carat Weight **1.54 CARAT**

Color Grade **FANCY INTENSE PINK**

Clarity Grade **VVS 2**



Sample Image Used



**ADDITIONAL GRADING INFORMATION**

Polish **EXCELLENT**

Symmetry **EXCELLENT**

Fluorescence **SLIGHT**

Inscription(s) **IGI LG754505017**

Comments: This Laboratory Grown Diamond was created by Chemical Vapor Deposition (CVD) growth process.

Indications of post-growth treatment.

Secondary color: Orange

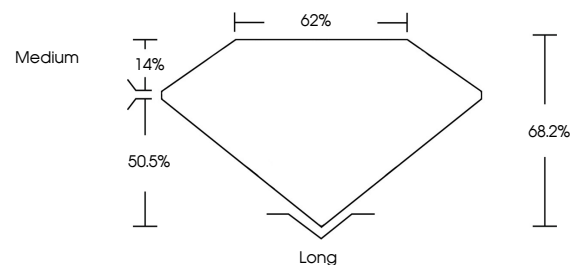


**IGI**

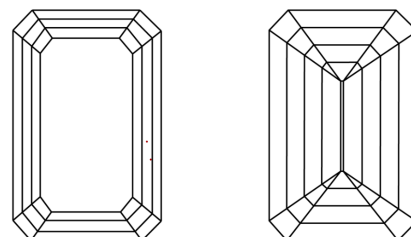
December 10, 2025	1.54 CARAT	Long
IGI Report No LG754505017	FANCY INTENSE PINK	EXCELLENT
EMERALD CUT	VVS 2	EXCELLENT
8.02 X 5.35 X 3.65 MM	68.2%	SLIGHT
Carat Weight	62%	IGI LG754505017
Color Grade	Medium	
Clarity Grade		
Depth		
Table		
Graile		
Culet		
Polish		
Symmetry		
Fluorescence		
Inscription(s)		

Comments: This Laboratory Grown Diamond was created by Chemical Vapor Deposition (CVD) growth process. Indications of post-growth treatment. Secondary color: Orange

**PROPORTIONS**



**CLARITY CHARACTERISTICS**



**KEY TO SYMBOLS**

Red symbols indicate internal characteristics.  
Green symbols indicate external characteristics.

**COLOR**

D E F G H I J Faint Very Light Light

**CLARITY**

FL	IF	VVS <sup>1-2</sup>	VS <sup>1-2</sup>	SI <sup>1-2</sup>	I <sup>1-3</sup>
Flawless	Internally Flawless	Very Very Slightly Included	Very Slightly Included	Slightly Included	Included

