



LABORATORY GROWN DIAMOND REPORT

January 8, 2026
 IGI Report Number **LG754504915**
 Description **LABORATORY GROWN DIAMOND**
 Shape and Cutting Style **PEAR MODIFIED BRILLIANT**
 Measurements **8.34 X 5.14 X 3.14 MM**

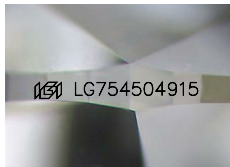
GRADING RESULTS

Carat Weight **0.93 CARAT**
 Color Grade **FANCY INTENSE YELLOW**
 Clarity Grade **VS 1**

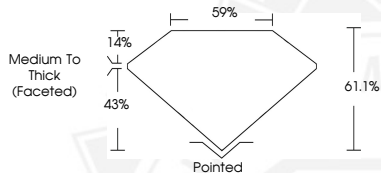
ADDITIONAL GRADING INFORMATION

Polish **VERY GOOD**
 Symmetry **EXCELLENT**
 Fluorescence **NONE**
 Inscription(s) **IGI LG754504915**

Comments: This Laboratory Grown Diamond was created by Chemical Vapor Deposition (CVD) growth process.



Sample Image Used



January 8, 2026
 IGI Report Number **LG754504915**
PEAR MODIFIED BRILLIANT
LABORATORY GROWN DIAMOND
8.34 X 5.14 X 3.14 MM
 Carat Weight **0.93 CARAT**
 Color Grade **FANCY INTENSE YELLOW**
 Clarity Grade **VS 1**
 Polish **VERY GOOD**
 Symmetry **EXCELLENT**
 Fluorescence **NONE**
 Inscription(s) **IGI LG754504915**
 Comments: This Laboratory Grown Diamond was created by Chemical Vapor Deposition (CVD) growth process.



January 8, 2026
 IGI Report Number **LG754504915**
PEAR MODIFIED BRILLIANT
LABORATORY GROWN DIAMOND
8.34 X 5.14 X 3.14 MM
 Carat Weight **0.93 CARAT**
 Color Grade **FANCY INTENSE YELLOW**
 Clarity Grade **VS 1**
 Polish **VERY GOOD**
 Symmetry **EXCELLENT**
 Fluorescence **NONE**
 Inscription(s) **IGI LG754504915**
 Comments: This Laboratory Grown Diamond was created by Chemical Vapor Deposition (CVD) growth process.



THIS DOCUMENT WAS PRODUCED WITH THE FOLLOWING SECURITY MEASURES: SPECIAL DOCUMENT PAPER, INK SCREENS, WATERMARK, BACKGROUND DESIGNS, HOLOGRAM AND OTHER SECURITY FEATURES NOT LISTED AND DO EXCEED DOCUMENT SECURITY INDUSTRY GUIDELINES.