



INTERNATIONAL  
GEMOLOGICAL  
INSTITUTE

ELECTRONIC COPY  
LABORATORY GROWN DIAMOND REPORT

December 1, 2025  
IGI Report Number LG754504048  
Description LABORATORY GROWN DIAMOND  
Shape and Cutting Style OVAL BRILLIANT  
Measurements 12.16 x 8.36 x 4.94 mm

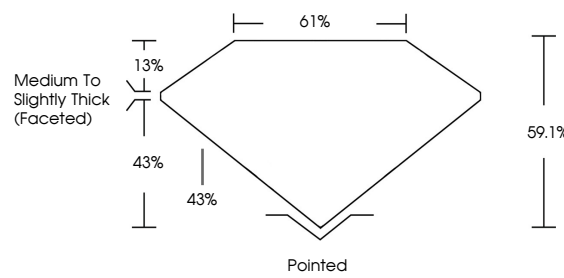
GRADING RESULTS  
Carat Weight 3.10 CARATS  
Color Grade D  
Clarity Grade VS 1

ADDITIONAL GRADING INFORMATION  
Polish EXCELLENT  
Symmetry EXCELLENT  
Fluorescence NONE  
Inscription(s) IGI LG754504048

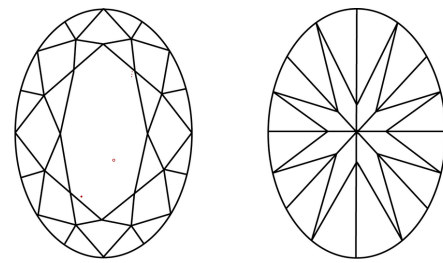
Comments: This Laboratory Grown Diamond was created by Chemical Vapor Deposition (CVD) growth process.  
Type IIa

LG754504048  
Report verification at igi.org

PROPORTIONS

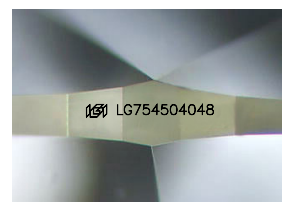


CLARITY CHARACTERISTICS



KEY TO SYMBOLS

Red symbols indicate internal characteristics.  
Green symbols indicate external characteristics.



Sample Image Used

www.igi.org

LIGHT PERFORMANCE REPORT

Light Performance Grade: Exceptional



Structured Light Environment Representation

Moderate High Superior Exceptional

Light Performance



Brightness



Fire



Contrast



COLOR

D E F G H I J Faint Very Light Light

CLARITY

FL IF VS 1-2 VS 1-2 SI 1-2 I 1-3

Flawless Internally Flawless Very Very Slightly Included Very Slightly Included Slightly Included Included

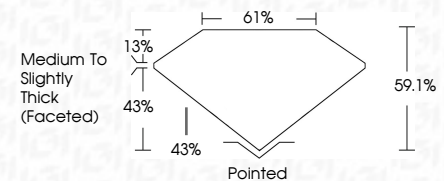
© IGI 2020, International Gemological Institute

FD - 10 20

THIS DOCUMENT WAS PRODUCED WITH THE FOLLOWING SECURITY MEASURES: SPECIAL DOCUMENT PAPER, INK SCREENS, WATERMARK, BACKGROUND DESIGNS, HOLOGRAM AND OTHER SECURITY FEATURES NOT LISTED AND DO EXCEED DOCUMENT SECURITY INDUSTRY GUIDELINES.



December 1, 2025  
IGI Report Number LG754504048  
Description LABORATORY GROWN DIAMOND  
Shape and Cutting Style OVAL BRILLIANT  
Measurements 12.16 X 8.36 X 4.94 MM  
GRADING RESULTS  
Carat Weight 3.10 CARATS  
Color Grade D  
Clarity Grade VS 1



ADDITIONAL GRADING INFORMATION  
Polish EXCELLENT  
Symmetry EXCELLENT  
Fluorescence NONE  
Inscription(s) IGI LG754504048  
Comments: This Laboratory Grown Diamond was created by Chemical Vapor Deposition (CVD) growth process.  
Type IIa



IGI

December 1, 2025  
IGI Report No LG754504048  
OVAL BRILLIANT  
12.16 X 8.36 X 4.94 MM  
Carat Weight 3.10 CARATS  
Color Grade D  
Depth 59.1%  
Table 61%  
Girdle Medium To Slightly Thick (Faceted)  
Culet Pointed  
Polish EXCELLENT  
Symmetry EXCELLENT  
Fluorescence NONE  
Inscription(s) IGI LG754504048  
Comments: This Laboratory Grown Diamond was created by Chemical Vapor Deposition (CVD) growth process.  
Type IIa