



**INTERNATIONAL  
GEMOLOGICAL  
INSTITUTE**

**ELECTRONIC COPY**



December 12, 2025

**IGI Report Number LG754503585**  
**MARQUISE BRILLIANT**  
**LABORATORY GROWN DIAMOND**  
**5.64 X 3.31 X 2.17 MM**

Carat Weight **0.23 CARAT**  
Color Grade **FANCY VIVID PINK**  
Clarity Grade **VVS 2**  
Polish **VERY GOOD**  
Symmetry **VERY GOOD**  
Fluorescence **STRONG**  
Inscription(s) **IGI LG754503585**

Comments: This Laboratory Grown Diamond was created by Chemical Vapor Deposition (CVD) growth process. Indications of post-growth treatment.

**LABORATORY GROWN DIAMOND REPORT**

December 12, 2025  
IGI Report Number **LG754503585**  
Description **LABORATORY GROWN DIAMOND**  
Shape and Cutting Style **MARQUISE BRILLIANT**  
Measurements **5.64 X 3.31 X 2.17 MM**

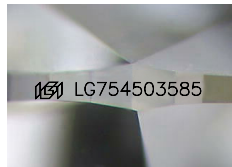
**GRADING RESULTS**

Carat Weight **0.23 CARAT**  
Color Grade **FANCY VIVID PINK**  
Clarity Grade **VVS 2**

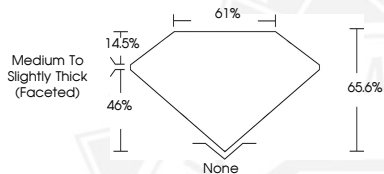
**ADDITIONAL GRADING INFORMATION**

Polish **VERY GOOD**  
Symmetry **VERY GOOD**  
Fluorescence **STRONG**  
Inscription(s) **IGI LG754503585**

Comments: This Laboratory Grown Diamond was created by Chemical Vapor Deposition (CVD) growth process. Indications of post-growth treatment.



Sample Image Used



December 12, 2025

**IGI Report Number LG754503585**  
**MARQUISE BRILLIANT**  
**LABORATORY GROWN DIAMOND**  
**5.64 X 3.31 X 2.17 MM**

Carat Weight **0.23 CARAT**  
Color Grade **FANCY VIVID PINK**  
Clarity Grade **VVS 2**  
Polish **VERY GOOD**  
Symmetry **VERY GOOD**  
Fluorescence **STRONG**  
Inscription(s) **IGI LG754503585**

Comments: This Laboratory Grown Diamond was created by Chemical Vapor Deposition (CVD) growth process. Indications of post-growth treatment.



THIS DOCUMENT WAS PRODUCED WITH THE FOLLOWING SECURITY MEASURES: SPECIAL DOCUMENT PAPER, INK SCREENS, WATERMARK, BACKGROUND DESIGNS, HOLOGRAM AND OTHER SECURITY FEATURES NOT LISTED AND DO EXCEED DOCUMENT SECURITY INDUSTRY GUIDELINES.

For terms & conditions and to verify this report, please visit [www.igi.org](http://www.igi.org)