



INTERNATIONAL GEMOLOGICAL INSTITUTE

LABORATORY GROWN DIAMOND REPORT

December 12, 2025

IGI Report Number

LG754503573

Description

LABORATORY GROWN DIAMOND

Shape and Cutting Style

RECTANGULAR PRINCESS CUT

Measurements

3.61 X 3.26 X 2.47 MM

GRADING RESULTS

Carat Weight

0.26 CARAT

Color Grade

FANCY INTENSE BROWNISH PINK

Clarity Grade

VS 2

ADDITIONAL GRADING INFORMATION

Polish

VERY GOOD

Symmetry

VERY GOOD

Fluorescence

SLIGHT

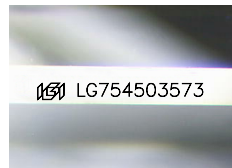
Inscription(s)

IGI LG754503573

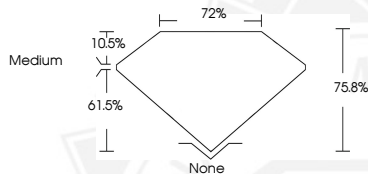
Comments: This Laboratory Grown Diamond was created by Chemical Vapor Deposition (CVD) growth process.

Indications of post-growth treatment.

ELECTRONIC COPY



Sample Image Used



December 12, 2025

IGI Report Number LG754503573

RECTANGULAR PRINCESS CUT

LABORATORY GROWN DIAMOND

3.61 X 3.26 X 2.47 MM

Carat Weight 0.26 CARAT

Color Grade FANCY INTENSE

BROWNISH PINK

Clarity Grade VS 2

Polish VERY GOOD

Symmetry VERY GOOD

Fluorescence SLIGHT

Inscription(s) IGI LG754503573

Comments: This Laboratory Grown Diamond was created by Chemical Vapor Deposition (CVD) growth process. Indications of post-growth treatment.



December 12, 2025

IGI Report Number LG754503573

RECTANGULAR PRINCESS CUT

LABORATORY GROWN DIAMOND

3.61 X 3.26 X 2.47 MM

Carat Weight 0.26 CARAT

Color Grade FANCY INTENSE

BROWNISH PINK

Clarity Grade VS 2

Polish VERY GOOD

Symmetry VERY GOOD

Fluorescence SLIGHT

Inscription(s) IGI LG754503573

Comments: This Laboratory Grown Diamond was created by Chemical Vapor Deposition (CVD) growth process. Indications of post-growth treatment.



THIS DOCUMENT WAS PRODUCED WITH THE FOLLOWING SECURITY MEASURES: SPECIAL DOCUMENT PAPER, INK SCREENS, WATERMARK, BACKGROUND DESIGNS, HOLOGRAM AND OTHER SECURITY FEATURES NOT LISTED AND DO EXCEED DOCUMENT SECURITY INDUSTRY GUIDELINES.

For terms & conditions and to verify this report, please visit www.igi.org