



LABORATORY GROWN DIAMOND REPORT

December 11, 2025
 IGI Report Number **LG754503552**
 Description **LABORATORY GROWN DIAMOND**
 Shape and Cutting Style **PRINCESS CUT**
 Measurements **3.55 X 3.46 X 2.34 MM**

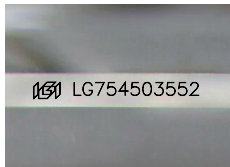
GRADING RESULTS

Carat Weight **0.23 CARAT**
 Color Grade **FANCY VIVID PINK**
 Clarity Grade **SI 1**

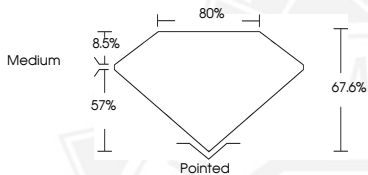
ADDITIONAL GRADING INFORMATION

Polish **VERY GOOD**
 Symmetry **GOOD**
 Fluorescence **STRONG**
 Inscription(s) **IGI LG754503552**

Comments: This Laboratory Grown Diamond was created by
 Chemical Vapor Deposition (CVD) growth process.
 Indications of post-growth treatment.



Sample Image Used



December 11, 2025
 IGI Report Number **LG754503552**
PRINCESS CUT
LABORATORY GROWN DIAMOND
3.55 X 3.46 X 2.34 MM
 Carat Weight **0.23 CARAT**
 Color Grade **FANCY VIVID PINK**
 Clarity Grade **SI 1**
 Polish **VERY GOOD**
 Symmetry **GOOD**
 Fluorescence **STRONG**
 Inscription(s) **IGI LG754503552**

Comments: This Laboratory Grown Diamond was created by
 Chemical Vapor Deposition (CVD) growth process. Indications of
 post-growth treatment.



December 11, 2025
 IGI Report Number **LG754503552**
PRINCESS CUT
LABORATORY GROWN DIAMOND
3.55 X 3.46 X 2.34 MM
 Carat Weight **0.23 CARAT**
 Color Grade **FANCY VIVID PINK**
 Clarity Grade **SI 1**
 Polish **VERY GOOD**
 Symmetry **GOOD**
 Fluorescence **STRONG**
 Inscription(s) **IGI LG754503552**

Comments: This Laboratory Grown Diamond was created by
 Chemical Vapor Deposition (CVD) growth process. Indications of
 post-growth treatment.



THIS DOCUMENT WAS PRODUCED WITH THE FOLLOWING SECURITY MEASURES: SPECIAL DOCUMENT PAPER, INK SCREENS, WATERMARK, BACKGROUND DESIGNS, HOLOGRAM AND OTHER SECURITY FEATURES NOT LISTED AND DO EXCEED DOCUMENT SECURITY INDUSTRY GUIDELINES.