



INTERNATIONAL GEMOLOGICAL INSTITUTE

ELECTRONIC COPY

LABORATORY GROWN DIAMOND REPORT

December 12, 2025
 IGI Report Number **LG754503527**
 Description **LABORATORY GROWN DIAMOND**
 Shape and Cutting Style **EMERALD CUT**
 Measurements **4.17 X 2.96 X 2.07 MM**

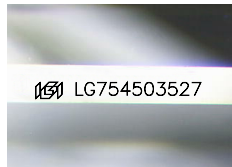
GRADING RESULTS

Carat Weight **0.23 CARAT**
 Color Grade **FANCY INTENSE PINK**
 Clarity Grade **VVS 2**

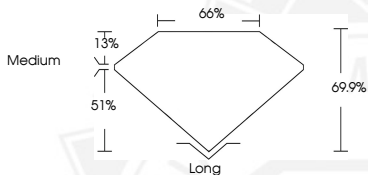
ADDITIONAL GRADING INFORMATION

Polish **VERY GOOD**
 Symmetry **VERY GOOD**
 Fluorescence **SLIGHT**
 Inscription(s) **IGI LG754503527**

Comments: This Laboratory Grown Diamond was created by
 Chemical Vapor Deposition (CVD) growth process.
 Indications of post-growth treatment.



Sample Image Used



December 12, 2025
 IGI Report Number **LG754503527**
EMERALD CUT
LABORATORY GROWN DIAMOND
4.17 X 2.96 X 2.07 MM
 Carat Weight **0.23 CARAT**
 Color Grade **FANCY INTENSE PINK**
 Clarity Grade **VVS 2**
 Polish **VERY GOOD**
 Symmetry **VERY GOOD**
 Fluorescence **SLIGHT**
 Inscription(s) **IGI LG754503527**

Comments: This Laboratory Grown Diamond was created by
 Chemical Vapor Deposition (CVD) growth process. Indications of
 post-growth treatment.



December 12, 2025
 IGI Report Number **LG754503527**
EMERALD CUT
LABORATORY GROWN DIAMOND
4.17 X 2.96 X 2.07 MM
 Carat Weight **0.23 CARAT**
 Color Grade **FANCY INTENSE PINK**
 Clarity Grade **VVS 2**
 Polish **VERY GOOD**
 Symmetry **VERY GOOD**
 Fluorescence **SLIGHT**
 Inscription(s) **IGI LG754503527**

Comments: This Laboratory Grown Diamond was created by
 Chemical Vapor Deposition (CVD) growth process. Indications of
 post-growth treatment.



THIS DOCUMENT WAS PRODUCED WITH THE FOLLOWING SECURITY MEASURES: SPECIAL DOCUMENT PAPER, INK SCREENS, WATERMARK, BACKGROUND DESIGNS, HOLOGRAM AND OTHER SECURITY FEATURES NOT LISTED AND DO EXCEED DOCUMENT SECURITY INDUSTRY GUIDELINES.

For terms & conditions and to verify this report, please visit www.igi.org