



ELECTRONIC COPY

LG753512123
Report verification at igi.org



December 2, 2025

IGI Report Number **LG753512123**

Description **LABORATORY GROWN DIAMOND**

Shape and Cutting Style **ROUND BRILLIANT**

Measurements **8.55 - 8.61 X 5.41 MM**

GRADING RESULTS

Carat Weight **2.49 CARATS**

Color Grade **F**

Clarity Grade **VVS 2**

Cut Grade **EXCELLENT**

December 2, 2025

IGI Report Number **LG753512123**

Description **LABORATORY GROWN DIAMOND**

Shape and Cutting Style **ROUND BRILLIANT**

Measurements **8.55 - 8.61 X 5.41 MM**

GRADING RESULTS

Carat Weight **2.49 CARATS**

Color Grade **F**

Clarity Grade **VVS 2**

Cut Grade **EXCELLENT**

ADDITIONAL GRADING INFORMATION

Polish **EXCELLENT**

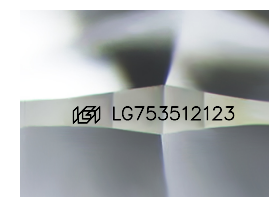
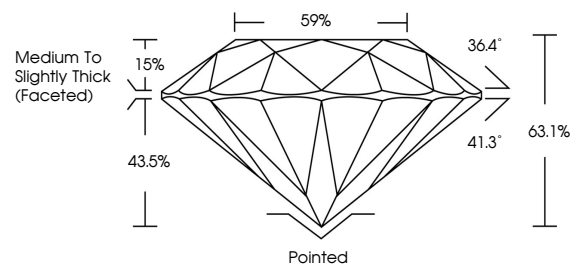
Symmetry **EXCELLENT**

Fluorescence **NONE**

Inscription(s) **LG753512123**

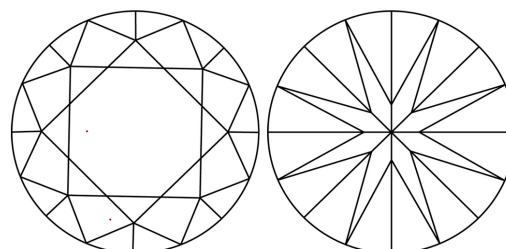
Comments: This Laboratory Grown Diamond was created by Chemical Vapor Deposition (CVD) growth process. Type IIa

PROPORTIONS



Sample Image Used

CLARITY CHARACTERISTICS



KEY TO SYMBOLS

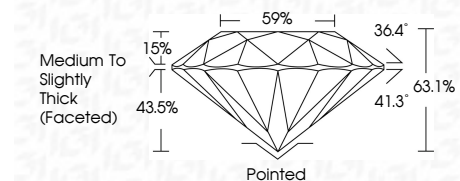
Red symbols indicate internal characteristics.
Green symbols indicate external characteristics.

COLOR

D E F G H I J Faint Very Light Light

CLARITY

FL	IF	VVS ¹⁻²	VS ¹⁻²	SI ¹⁻²	I ¹⁻³
Flawless	Internally Flawless	Very Very Slightly Included	Very Slightly Included	Slightly Included	Included



ADDITIONAL GRADING INFORMATION

Polish **EXCELLENT**

Symmetry **EXCELLENT**

Fluorescence **NONE**

Inscription(s) **LG753512123**

Comments: This Laboratory Grown Diamond was created by Chemical Vapor Deposition (CVD) growth process. Type IIa



IGI



December 2, 2025
IGI Report No LG753512123
ROUND BRILLIANT

2.49 CARATS
Carat Weight

F
Color Grade

VVS 2
Clarity Grade

EXCELLENT
Cut Grade

63.1%
Depth

59%
Table

Medium To Slightly Thick (Faceted)
Girdle

Pointed
Culet

EXCELLENT
Polish

EXCELLENT
Symmetry

NONE
Fluorescence

IGI LG753512123
Inscription(s)

Comments: This Laboratory Grown Diamond was created by Chemical Vapor Deposition (CVD) growth process. Type IIa