



ELECTRONIC COPY

LG753510610
Report verification at igi.org



December 3, 2025

IGI Report Number **LG753510610**

Description **LABORATORY GROWN DIAMOND**

Shape and Cutting Style **CUT CORNERED
RECTANGULAR MODIFIED
BRILLIANT**

Measurements **10.39 X 7.16 X 4.86 MM**

GRADING RESULTS

Carat Weight **3.09 CARATS**

Color Grade **D**

Clarity Grade **VS 2**

December 3, 2025

IGI Report Number **LG753510610**

Description **LABORATORY GROWN DIAMOND**

Shape and Cutting Style **CUT CORNERED RECTANGULAR
MODIFIED BRILLIANT**

Measurements **10.39 X 7.16 X 4.86 MM**

GRADING RESULTS

Carat Weight **3.09 CARATS**

Color Grade **D**

Clarity Grade **VS 2**

ADDITIONAL GRADING INFORMATION

Polish **EXCELLENT**

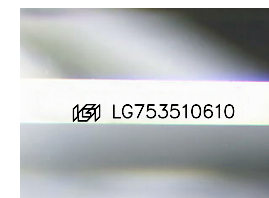
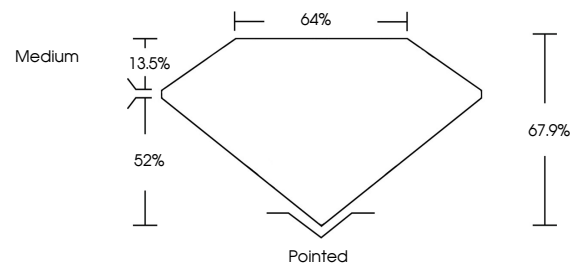
Symmetry **EXCELLENT**

Fluorescence **NONE**

Inscription(s) **IGI LG753510610**

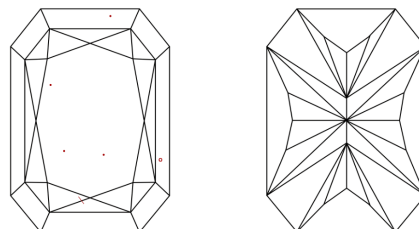
Comments: This Laboratory Grown Diamond was created by Chemical Vapor Deposition (CVD) growth process. Type IIa

PROPORTIONS



Sample Image Used

CLARITY CHARACTERISTICS



KEY TO SYMBOLS

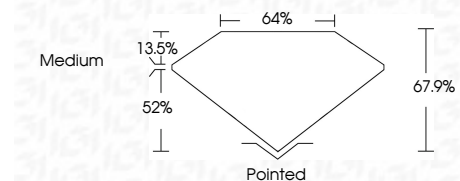
Red symbols indicate internal characteristics.
Green symbols indicate external characteristics.

COLOR

D E F G H I J Faint Very Light Light

CLARITY

FL	IF	VS ¹⁻²	VS ¹⁻²	SI ¹⁻²	I ¹⁻³
Flawless	Internally Flawless	Very Very Slightly Included	Very Slightly Included	Slightly Included	Included



ADDITIONAL GRADING INFORMATION

Polish **EXCELLENT**

Symmetry **EXCELLENT**

Fluorescence **NONE**

Inscription(s) **IGI LG753510610**

Comments: This Laboratory Grown Diamond was created by Chemical Vapor Deposition (CVD) growth process. Type IIa



IGI



December 3, 2025
IGI Report No LG753510610
CUT CORNERED RECT. MODIFIED BRILLIANT
3.09 CARATS
Color Grade D
Clarity Grade VS 2
Table 13.5%
Depth 52%
Width 64%
Height 67.9%
Medium
Pointed
Polish EXCELLENT
Symmetry EXCELLENT
Fluorescence NONE
Inscription(s) IGI LG753510610

Comments: This Laboratory Grown Diamond was created by Chemical Vapor Deposition (CVD) growth process. Type IIa