



**ELECTRONIC COPY**

LG753508115  
Report verification at igi.org



December 2, 2025

IGI Report Number **LG753508115**

Description **LABORATORY GROWN DIAMOND**

Shape and Cutting Style **ROUND BRILLIANT**

Measurements **9.24 - 9.27 X 5.73 MM**

**GRADING RESULTS**

Carat Weight **3.04 CARATS**

Color Grade **G**

Clarity Grade **VVS 2**

Cut Grade **EXCELLENT**

December 2, 2025  
IGI Report Number **LG753508115**  
Description **LABORATORY GROWN DIAMOND**  
Shape and Cutting Style **ROUND BRILLIANT**  
Measurements **9.24 - 9.27 X 5.73 MM**

**GRADING RESULTS**

Carat Weight **3.04 CARATS**

Color Grade **G**

Clarity Grade **VVS 2**

Cut Grade **EXCELLENT**

**ADDITIONAL GRADING INFORMATION**

Polish **EXCELLENT**

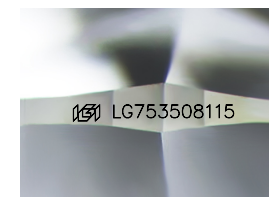
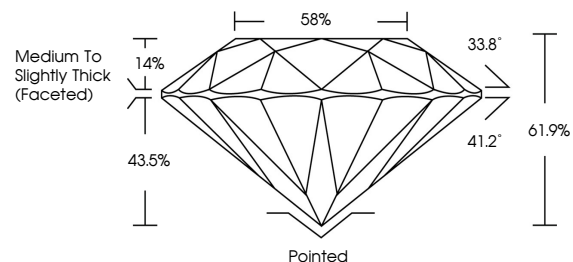
Symmetry **EXCELLENT**

Fluorescence **NONE**

Inscription(s) **LG753508115**

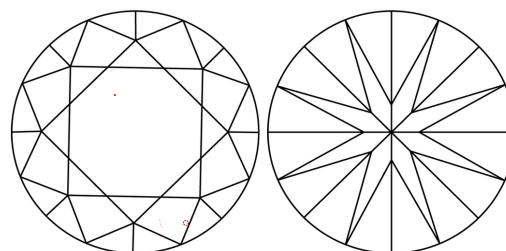
Comments: This Laboratory Grown Diamond was created by Chemical Vapor Deposition (CVD) growth process.  
Type IIa

**PROPORTIONS**



Sample Image Used

**CLARITY CHARACTERISTICS**



**KEY TO SYMBOLS**

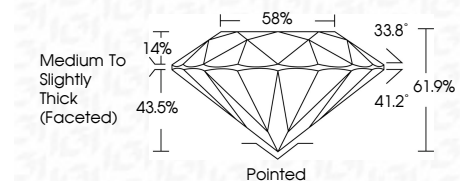
Red symbols indicate internal characteristics.  
Green symbols indicate external characteristics.

**COLOR**

D E F G H I J Faint Very Light Light

**CLARITY**

FL	IF	VVS <sup>1-2</sup>	VS <sup>1-2</sup>	SI <sup>1-2</sup>	I <sup>1-3</sup>
Flawless	Internally Flawless	Very Very Slightly Included	Very Slightly Included	Slightly Included	Included



**ADDITIONAL GRADING INFORMATION**

Polish **EXCELLENT**

Symmetry **EXCELLENT**

Fluorescence **NONE**

Inscription(s) **LG753508115**

Comments: This Laboratory Grown Diamond was created by Chemical Vapor Deposition (CVD) growth process.  
Type IIa



**IGI**



December 2, 2025  
IGI Report No LG753508115  
**ROUND BRILLIANT**

**3.04 CARATS**  
Carat Weight  
Color Grade **G**

**VVS 2**  
Clarity Grade  
Cut Grade **EXCELLENT**

**61.9%**  
Depth  
Table **58%**  
Girdle  
Medium To Slightly Thick (Faceted)

**Pointed**  
Culet  
Polish **EXCELLENT**  
Symmetry **EXCELLENT**  
Fluorescence **NONE**  
Inscription(s) LG753508115

Comments: This Laboratory Grown Diamond was created by Chemical Vapor Deposition (CVD) growth process.  
Type IIa