



# INTERNATIONAL GEMOLOGICAL INSTITUTE

ELECTRONIC COPY

## LABORATORY GROWN DIAMOND REPORT

December 8, 2025  
IGI Report Number **LG753501775**  
Description **LABORATORY GROWN DIAMOND**  
Shape and Cutting Style **PRINCESS CUT**  
Measurements **3.51 X 3.34 X 2.28 MM**

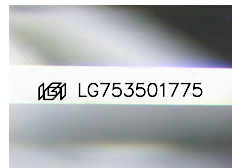
### GRADING RESULTS

Carat Weight **0.24 CARAT**  
Color Grade **FANCY INTENSE BROWNISH ORANGE**  
Clarity Grade **VS 2**

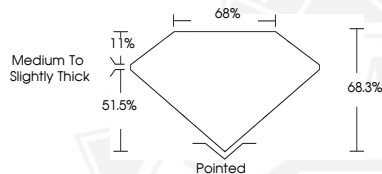
### ADDITIONAL GRADING INFORMATION

Polish **VERY GOOD**  
Symmetry **VERY GOOD**  
Fluorescence **SLIGHT**  
Inscription(s) **IGI LG753501775**

Comments: This Laboratory Grown Diamond was created by Chemical Vapor Deposition (CVD) growth process. Indications of post-growth treatment.



Sample Image Used



December 8, 2025  
IGI Report Number **LG753501775**  
**PRINCESS CUT**  
**LABORATORY GROWN DIAMOND**  
**3.51 X 3.34 X 2.28 MM**  
Carat Weight **0.24 CARAT**  
Color Grade **FANCY INTENSE BROWNISH ORANGE**  
Clarity Grade **VS 2**  
Polish **VERY GOOD**  
Symmetry **VERY GOOD**  
Fluorescence **SLIGHT**  
Inscription(s) **IGI LG753501775**  
Comments: This Laboratory Grown Diamond was created by Chemical Vapor Deposition (CVD) growth process. Indications of post-growth treatment.



December 8, 2025  
IGI Report Number **LG753501775**  
**PRINCESS CUT**  
**LABORATORY GROWN DIAMOND**  
**3.51 X 3.34 X 2.28 MM**  
Carat Weight **0.24 CARAT**  
Color Grade **FANCY INTENSE BROWNISH ORANGE**  
Clarity Grade **VS 2**  
Polish **VERY GOOD**  
Symmetry **VERY GOOD**  
Fluorescence **SLIGHT**  
Inscription(s) **IGI LG753501775**  
Comments: This Laboratory Grown Diamond was created by Chemical Vapor Deposition (CVD) growth process. Indications of post-growth treatment.



THIS DOCUMENT WAS PRODUCED WITH THE FOLLOWING SECURITY MEASURES: SPECIAL DOCUMENT PAPER, INK SCREENS, WATERMARK, BACKGROUND DESIGNS, HOLOGRAM AND OTHER SECURITY FEATURES NOT LISTED AND DO EXCEED DOCUMENT SECURITY INDUSTRY GUIDELINES.

For terms & conditions and to verify this report, please visit [www.igi.org](http://www.igi.org)