



# INTERNATIONAL GEMOLOGICAL INSTITUTE

ELECTRONIC COPY

## LABORATORY GROWN DIAMOND REPORT

December 1, 2025

IGI Report Number

LG753501555

Description

LABORATORY GROWN DIAMOND

Shape and Cutting Style

ROUND BRILLIANT

Measurements

5.14 - 5.16 X 3.20 MM

### GRADING RESULTS

Carat Weight

0.53 CARAT

Color Grade

E

Clarity Grade

VVS 2

Cut Grade

IDEAL

### ADDITIONAL GRADING INFORMATION

Polish

VERY GOOD

Symmetry

VERY GOOD

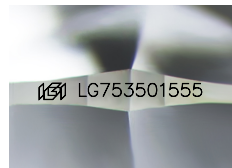
Fluorescence

NONE

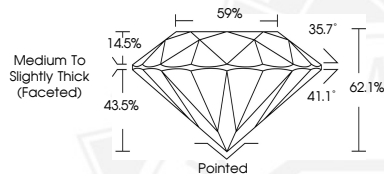
Inscription(s)

IGI LG753501555

Comments: This Laboratory Grown Diamond was created by Chemical Vapor Deposition (CVD) growth process. Type IIa



Sample Image Used



December 1, 2025

IGI Report Number LG753501555

ROUND BRILLIANT

LABORATORY GROWN DIAMOND

5.14 - 5.16 X 3.20 MM

Carat Weight 0.53 CARAT

Color Grade E

Clarity Grade VVS 2

Cut Grade IDEAL

Polish VERY GOOD

Symmetry VERY GOOD

Fluorescence NONE

Inscription(s) IGI LG753501555

Comments: This Laboratory Grown Diamond was created by Chemical Vapor Deposition (CVD) growth process. Type IIa



December 1, 2025

IGI Report Number LG753501555

ROUND BRILLIANT

LABORATORY GROWN DIAMOND

5.14 - 5.16 X 3.20 MM

Carat Weight 0.53 CARAT

Color Grade E

Clarity Grade VVS 2

Cut Grade IDEAL

Polish VERY GOOD

Symmetry VERY GOOD

Fluorescence NONE

Inscription(s) IGI LG753501555

Comments: This Laboratory Grown Diamond was created by Chemical Vapor Deposition (CVD) growth process. Type IIa



THIS DOCUMENT WAS PRODUCED WITH THE FOLLOWING SECURITY MEASURES: SPECIAL DOCUMENT PAPER, INK SCREENS, WATERMARK, BACKGROUND DESIGNS, HOLOGRAM AND OTHER SECURITY FEATURES NOT LISTED AND DO EXCEED DOCUMENT SECURITY INDUSTRY GUIDELINES.

For terms & conditions and to verify this report, please visit [www.igi.org](http://www.igi.org)