



ELECTRONIC COPY

LG752590541 Report verification at igi.org



December 1, 2025 IGI Report Number LG752590541 Description LABORATORY GROWN DIAMOND Shape and Cutting Style ROUND BRILLIANT Measurements 9.22 - 9.25 X 5.85 MM GRADING RESULTS Carat Weight 3.10 CARATS Color Grade E Clarity Grade VS 1 Cut Grade EXCELLENT

December 1, 2025 IGI Report Number LG752590541 Description LABORATORY GROWN DIAMOND Shape and Cutting Style ROUND BRILLIANT Measurements 9.22 - 9.25 X 5.85 MM

GRADING RESULTS

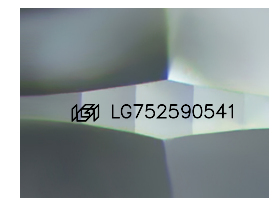
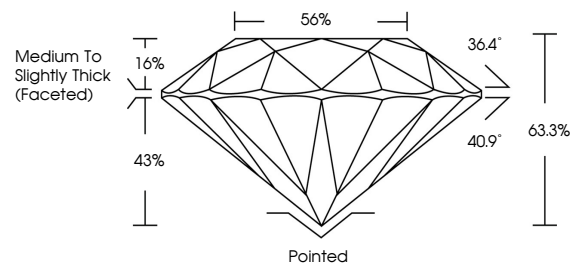
Carat Weight 3.10 CARATS Color Grade E Clarity Grade VS 1 Cut Grade EXCELLENT

ADDITIONAL GRADING INFORMATION

Polish EXCELLENT Symmetry EXCELLENT Fluorescence NONE Inscription(s) IGI LG752590541

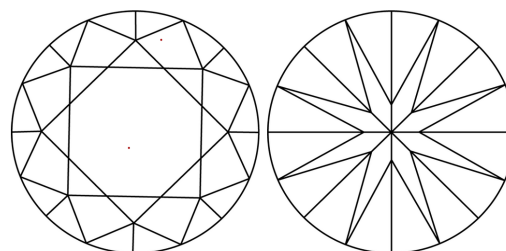
Comments: This Laboratory Grown Diamond was created by Chemical Vapor Deposition (CVD) growth process. Type IIa

PROPORTIONS



Sample Image Used

CLARITY CHARACTERISTICS



KEY TO SYMBOLS

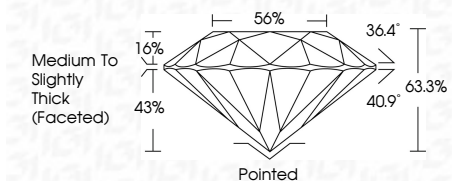
Red symbols indicate internal characteristics. Green symbols indicate external characteristics.

COLOR

D E F G H I J Faint Very Light Light

CLARITY

FL IF VS 1-2 VS 2-3 SI 1-2 I 1-3 Flawless Internally Flawless Very Very Slightly Included Very Slightly Included Slightly Included Included



ADDITIONAL GRADING INFORMATION

Polish EXCELLENT Symmetry EXCELLENT Fluorescence NONE Inscription(s) IGI LG752590541 Comments: This Laboratory Grown Diamond was created by Chemical Vapor Deposition (CVD) growth process. Type IIa



IGI



December 1, 2025 IGI Report No LG752590541 ROUND BRILLIANT 3.10 CARATS E VS 1 EXCELLENT 63.3% 56% Medium To Slightly Thick (Faceted) Pointed EXCELLENT EXCELLENT NONE NONE IGI LG752590541 Comments: This Laboratory Grown Diamond was created by Chemical Vapor Deposition (CVD) growth process. Type IIa