



**ELECTRONIC COPY**

## LABORATORY GROWN DIAMOND REPORT

November 29, 2025	
IGI Report Number	LG752589447
Description	LABORATORY GROWN DIAMOND
Shape and Cutting Style	ROUND BRILLIANT
Measurements	9.24 - 9.30 X 5.73 MM

## GRADING RESULTS

Carat Weight	3.05 CARATS
Color Grade	D
Clarity Grade	VVS 2
Cut Grade	IDEAL

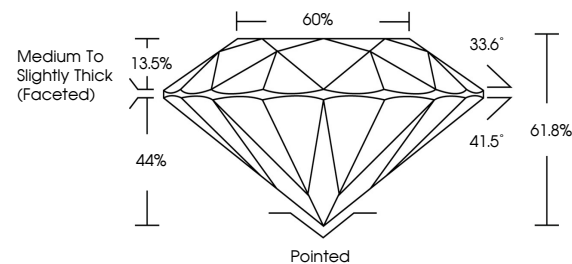
### ADDITIONAL GRADING INFORMATION

Polish	EXCELLENT
Symmetry	EXCELLENT
Fluorescence	NONE
Inscription(s)	 LG752589447

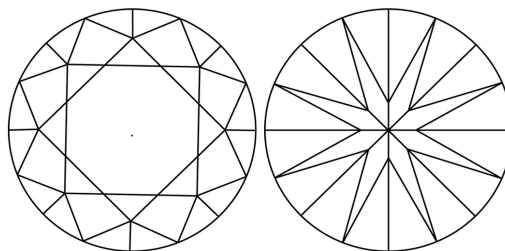
Comments: This Laboratory Grown Diamond was created by Chemical Vapor Deposition (CVD) growth process.  
Type IIa

LG752589447  
Report verification at [igi.org](https://igi.org)

## PROPORTIONS

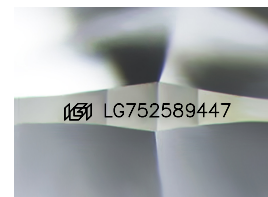


## CLARITY CHARACTERISTICS



## KEY TO SYMBOLS

Red symbols indicate internal characteristics.  
Green symbols indicate external characteristics.



Sample Image Used

**COLOR**

D E F G H I J Faint Very Light Light

## CLARITY

FL	IF	VVS <sup>1-2</sup>	VS <sup>1-2</sup>	SI <sup>1-2</sup>	I <sup>1-3</sup>
Flawless	Internally Flawless	Very Very Slightly Included	Very Slightly Included	Slightly Included	Included

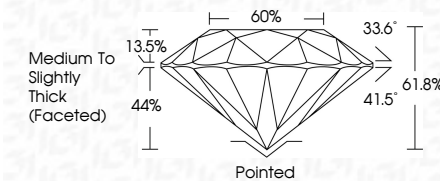
## LABORATORY GROWN DIAMOND REPORT



November 29, 2025	
IGI Report Number	LG752589447
Description	LABORATORY GROWN DIAMOND
Shape and Cutting Style	ROUND BRILLIANT
Measurements	9.24 - 9.30 X 5.73 MM

## GRADING RESULTS

Carat Weight	3.05 CARATS
Color Grade	D
Clarity Grade	VVS 2
Cut Grade	IDEAL



### ADDITIONAL GRADING INFORMATION

Polish	EXCELLENT
Symmetry	EXCELLENT
Fluorescence	NONE
Inscription(s)	(15) LG752589447

Comments: This Laboratory Grown Diamond was created by Chemical Vapor Deposition (CVD) growth process.  
Type IIa



© IGI 2020, International Gemological Institute

FD - 10 20



THIS DOCUMENT WAS PRODUCED WITH THE FOLLOWING SECURITY MEASURES: SPECIAL DOCUMENT PAPER, INK SCREENS, WATERMARK, BACKGROUND DESIGNS, HOLOGRAM AND OTHER SECURITY FEATURES NOT LISTED AND DO EXCEED DOCUMENT SECURITY INDUSTRY GUIDELINES

**www.igi.org**

November 29, 2025  
IGI Report No LG752589447  
ROUND BRILLIANT

9.24 - 9.30 X 5.73 MM		3.05 CARATS	
Carat Weight			
Color Grade			
Clarity Grade		VVS 2	
Cut Grade		IDEAL	
Depth		61.9%	
Table		60%	
Grade		Medium to Slightly Thick (Faceted)	
Culet		Pointed	
Polish		EXCELLENT	
Symmetry		EXCELLENT	
Fluorescence		NONE	

**Comments:**  
This Laboratory Grown Diamond was created by Chemical Vapor Deposition (CVD) growth process.