



**ELECTRONIC COPY**

LG752587493  
Report verification at igi.org



November 30, 2025  
IGI Report Number **LG752587493**  
Description **LABORATORY GROWN DIAMOND**  
Shape and Cutting Style **ROUND BRILLIANT**  
Measurements **10.71 - 10.78 X 6.78 MM**  
**GRADING RESULTS**  
Carat Weight **4.88 CARATS**  
Color Grade **E**  
Clarity Grade **VVS 2**  
Cut Grade **EXCELLENT**

November 30, 2025  
IGI Report Number **LG752587493**  
Description **LABORATORY GROWN DIAMOND**  
Shape and Cutting Style **ROUND BRILLIANT**  
Measurements **10.71 - 10.78 X 6.78 MM**

**GRADING RESULTS**

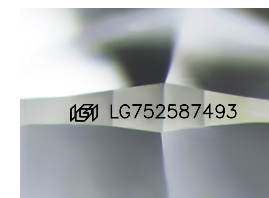
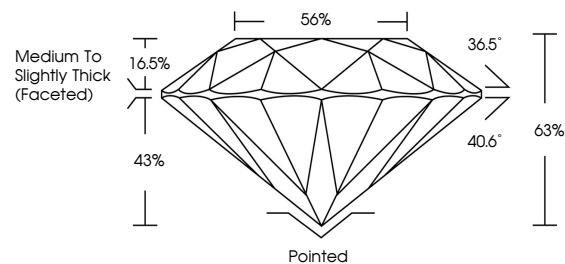
Carat Weight **4.88 CARATS**  
Color Grade **E**  
Clarity Grade **VVS 2**  
Cut Grade **EXCELLENT**

**ADDITIONAL GRADING INFORMATION**

Polish **EXCELLENT**  
Symmetry **EXCELLENT**  
Fluorescence **NONE**  
Inscription(s) **IGI LG752587493**

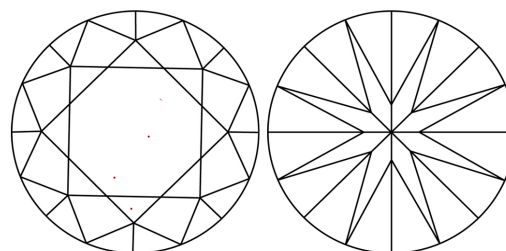
Comments: This Laboratory Grown Diamond was created by Chemical Vapor Deposition (CVD) growth process.  
Type IIa

**PROPORTIONS**



Sample Image Used

**CLARITY CHARACTERISTICS**



**KEY TO SYMBOLS**

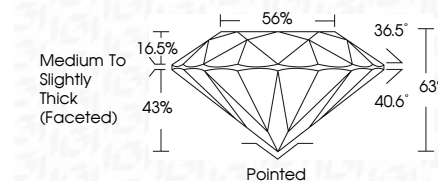
Red symbols indicate internal characteristics.  
Green symbols indicate external characteristics.

**COLOR**

D E F G H I J Faint Very Light Light

**CLARITY**

FL	IF	VVS <sup>1-2</sup>	VS <sup>1-2</sup>	SI <sup>1-2</sup>	I <sup>1-3</sup>
Flawless	Internally Flawless	Very Very Slightly Included	Very Slightly Included	Slightly Included	Included



**ADDITIONAL GRADING INFORMATION**

Polish **EXCELLENT**  
Symmetry **EXCELLENT**  
Fluorescence **NONE**  
Inscription(s) **IGI LG752587493**  
Comments: This Laboratory Grown Diamond was created by Chemical Vapor Deposition (CVD) growth process.  
Type IIa



**IGI**



November 30, 2025  
IGI Report No LG752587493  
**ROUND BRILLIANT**  
10.71 - 10.78 X 6.78 MM  
4.88 CARATS  
E  
VVS 2  
EXCELLENT  
EXCELLENT  
EXCELLENT  
None  
IGI LG752587493  
Pointed  
EXCELLENT  
EXCELLENT  
None  
None  
IGI LG752587493  
Medium To Slightly Thick (Faceted)  
Comments: This Laboratory Grown Diamond was created by Chemical Vapor Deposition (CVD) growth process.  
Type IIa