



ELECTRONIC COPY

LG752586947
Report verification at igi.org



December 3, 2025
IGI Report Number **LG752586947**
Description **LABORATORY GROWN DIAMOND**
Shape and Cutting Style **SQUARE CUSHION MODIFIED BRILLIANT**
Measurements **6.98 X 6.63 X 4.59 MM**
GRADING RESULTS
Carat Weight **1.94 CARAT**
Color Grade **FANCY VIVID BLUISH GREEN**
Clarity Grade **VS 1**

December 3, 2025
IGI Report Number **LG752586947**
Description **LABORATORY GROWN DIAMOND**
Shape and Cutting Style **SQUARE CUSHION MODIFIED BRILLIANT**
Measurements **6.98 X 6.63 X 4.59 MM**

GRADING RESULTS

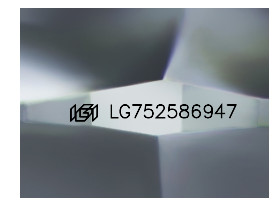
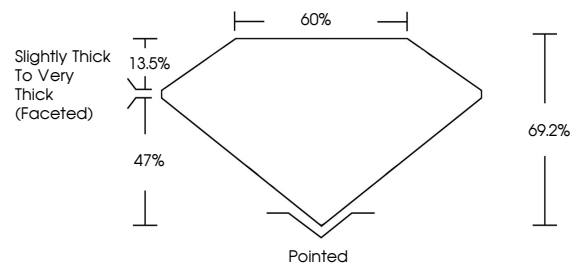
Carat Weight **1.94 CARAT**
Color Grade **FANCY VIVID BLUISH GREEN**
Clarity Grade **VS 1**

ADDITIONAL GRADING INFORMATION

Polish **VERY GOOD**
Symmetry **VERY GOOD**
Fluorescence **NONE**
Inscription(s) **IGI LG752586947**

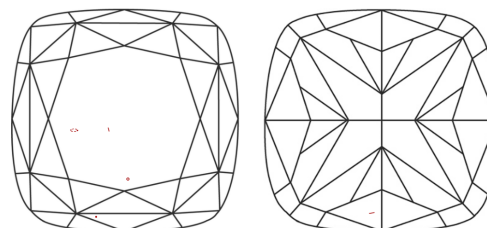
Comments: This Laboratory Grown Diamond was created by Chemical Vapor Deposition (CVD) growth process. Indications of post-growth treatment.

PROPORTIONS



Sample Image Used

CLARITY CHARACTERISTICS



KEY TO SYMBOLS

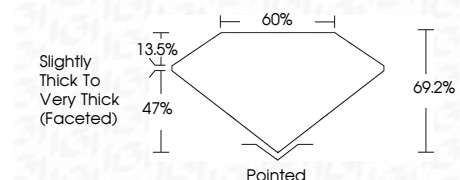
Red symbols indicate internal characteristics.
Green symbols indicate external characteristics.

COLOR

D E F G H I J Faint Very Light Light

CLARITY

FL	IF	VS ¹⁻²	VVS ¹⁻²	S ¹⁻²	I ¹⁻³
Flawless	Internally Flawless	Very Very Slightly Included	Very Slightly Included	Slightly Included	Included



ADDITIONAL GRADING INFORMATION

Polish **VERY GOOD**
Symmetry **VERY GOOD**
Fluorescence **NONE**
Inscription(s) **IGI LG752586947**
Comments: This Laboratory Grown Diamond was created by Chemical Vapor Deposition (CVD) growth process. Indications of post-growth treatment.



December 3, 2025
IGI Report No. **LG752586947**
SQUARE CUSHION MODIFIED BRILLIANT
6.98 X 6.63 X 4.59 MM
Carat Weight **1.94 CARAT**
Color Grade **FANCY VIVID BLUISH GREEN**
Clarity Grade **VS 1**
Table **60%**
Depth **47%**
Girdle **Slightly Thick To Very Thick (Faceted)**
Culet **Pointed**
Polish **VERY GOOD**
Symmetry **VERY GOOD**
Fluorescence **NONE**
Inscription(s) **IGI LG752586947**
Comments: This Laboratory Grown Diamond was created by Chemical Vapor Deposition (CVD) growth process. Indications of post-growth treatment.