



INTERNATIONAL GEMOLOGICAL INSTITUTE

ELECTRONIC COPY

LABORATORY GROWN DIAMOND REPORT

December 11, 2025

IGI Report Number

LG752586147

Description

LABORATORY GROWN DIAMOND

Shape and Cutting Style

OVAL BRILLIANT

Measurements

6.15 X 4.09 X 2.65 MM

GRADING RESULTS

Carat Weight

0.45 CARAT

Color Grade

G

Clarity Grade

VS 1

ADDITIONAL GRADING INFORMATION

Polish

VERY GOOD

Symmetry

FAIR

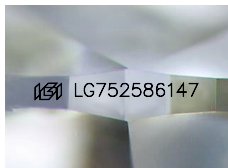
Fluorescence

NONE

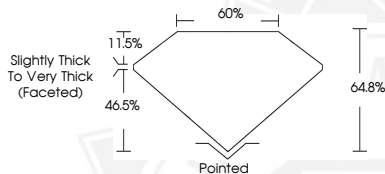
Inscription(s)

IGI LG752586147

Comments: This Laboratory Grown Diamond was created by Chemical Vapor Deposition (CVD) growth process. Type IIa



Sample Image Used



December 11, 2025

IGI Report Number LG752586147

OVAL BRILLIANT

LABORATORY GROWN DIAMOND

6.15 X 4.09 X 2.65 MM

Carat Weight 0.45 CARAT

Color Grade G

Clarity Grade VS 1

Polish VERY GOOD

Symmetry FAIR

Fluorescence NONE

Inscription(s) IGI LG752586147

Comments: This Laboratory Grown Diamond was created by Chemical Vapor Deposition (CVD) growth process. Type IIa



December 11, 2025

IGI Report Number LG752586147

OVAL BRILLIANT

LABORATORY GROWN DIAMOND

6.15 X 4.09 X 2.65 MM

Carat Weight 0.45 CARAT

Color Grade G

Clarity Grade VS 1

Polish VERY GOOD

Symmetry FAIR

Fluorescence NONE

Inscription(s) IGI LG752586147

Comments: This Laboratory Grown Diamond was created by Chemical Vapor Deposition (CVD) growth process. Type IIa



THIS DOCUMENT WAS PRODUCED WITH THE FOLLOWING SECURITY MEASURES: SPECIAL DOCUMENT PAPER, INK SCREENS, WATERMARK, BACKGROUND DESIGNS, HOLOGRAM AND OTHER SECURITY FEATURES NOT LISTED AND DO EXCEED DOCUMENT SECURITY INDUSTRY GUIDELINES.

For terms & conditions and to verify this report, please visit www.igi.org